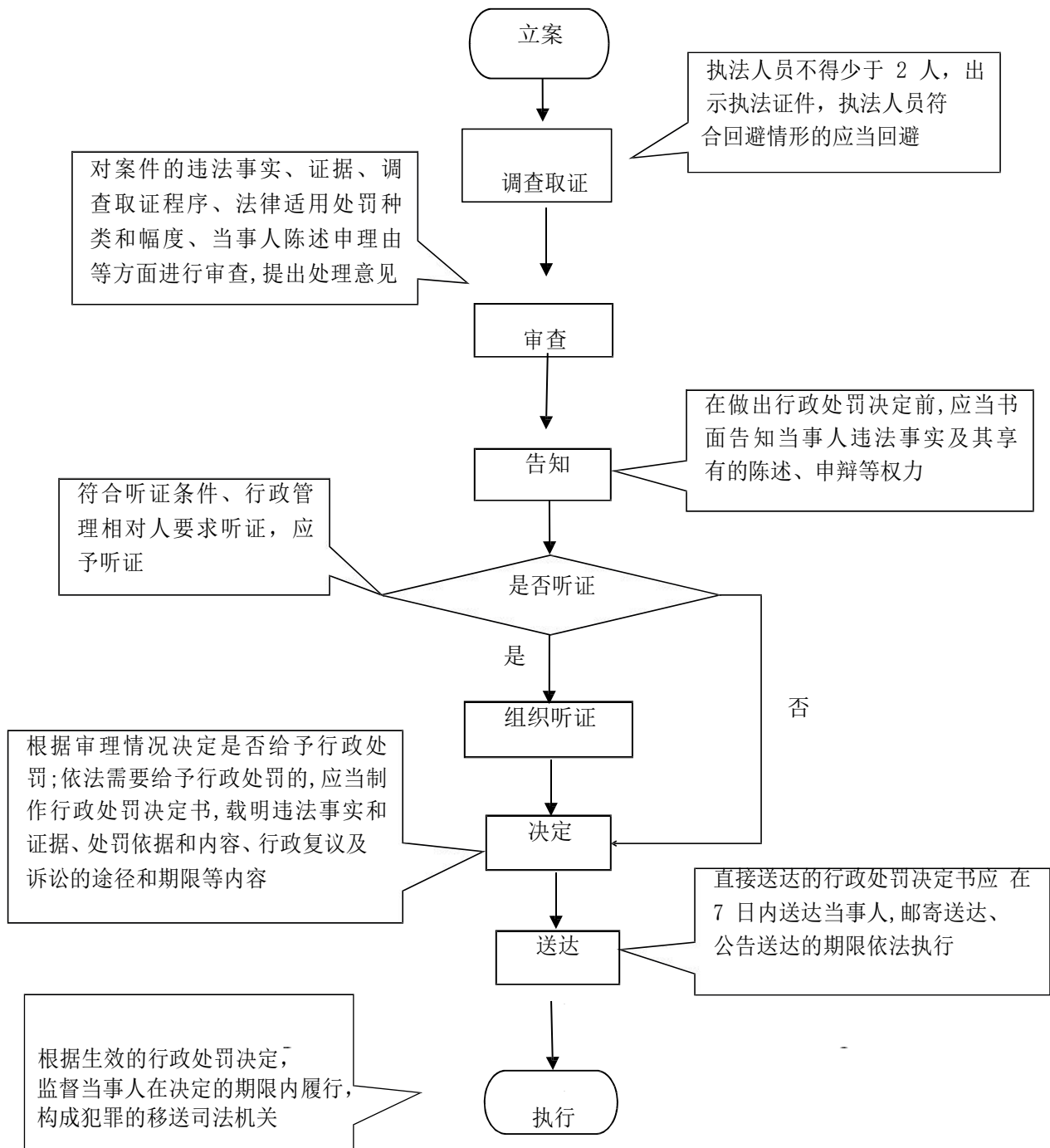
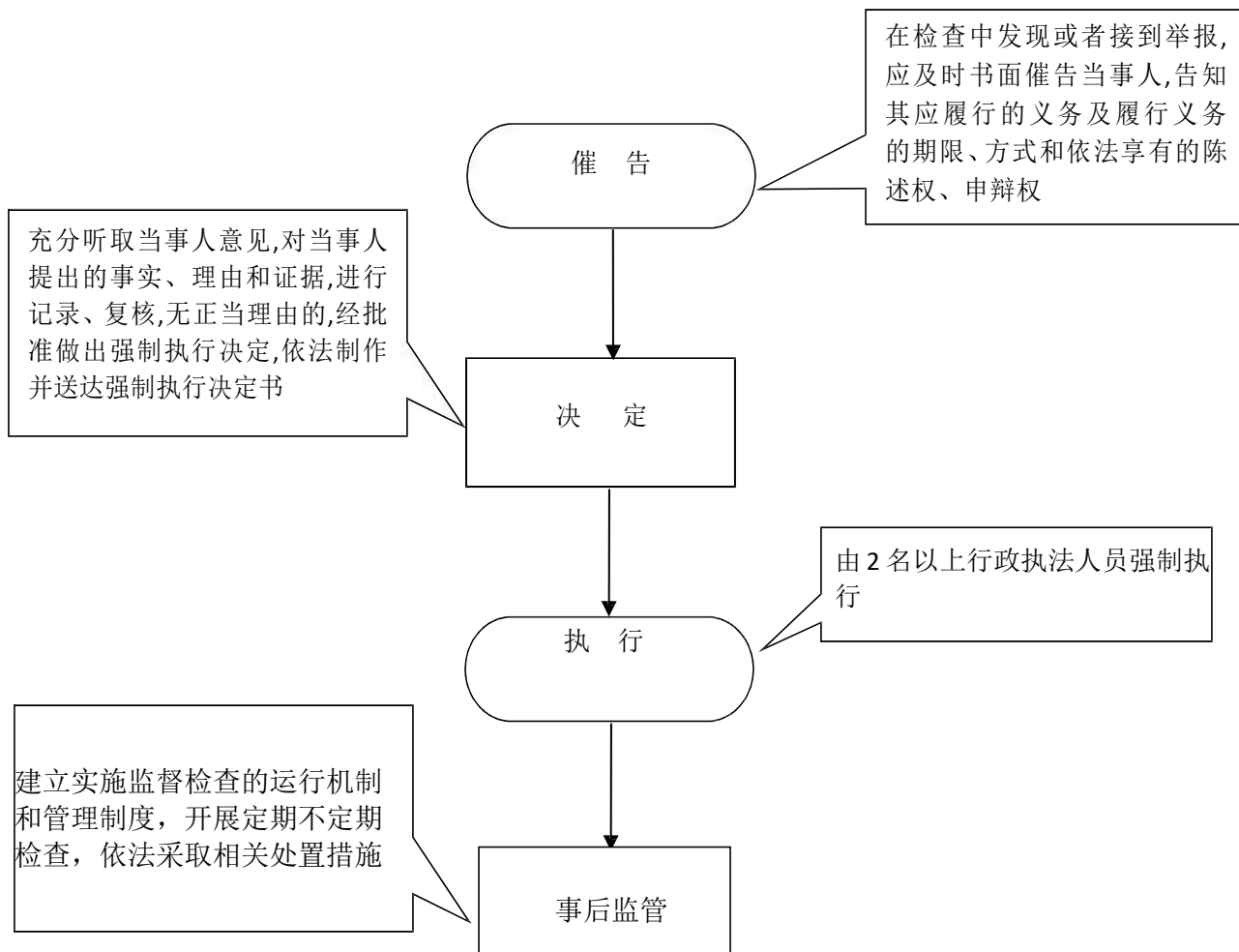


王桥镇权力运行流程图

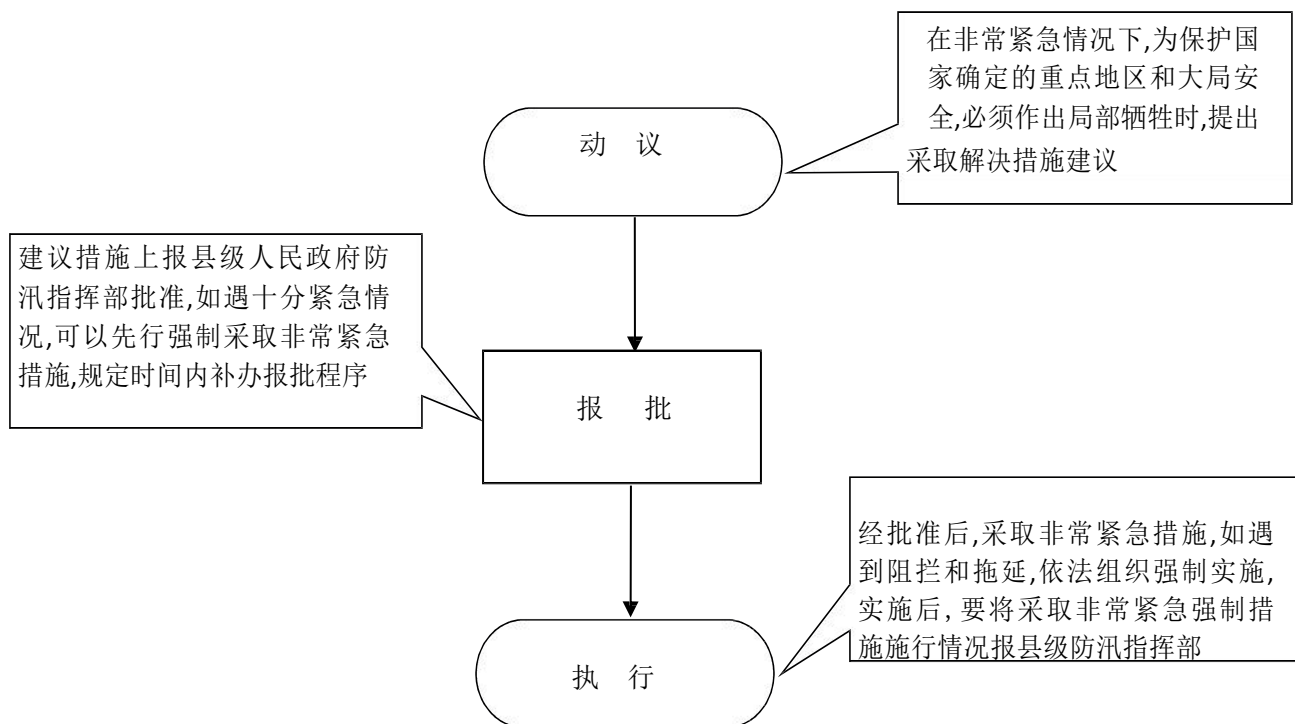
1、行政处罚类权力运行流程图（1-4）



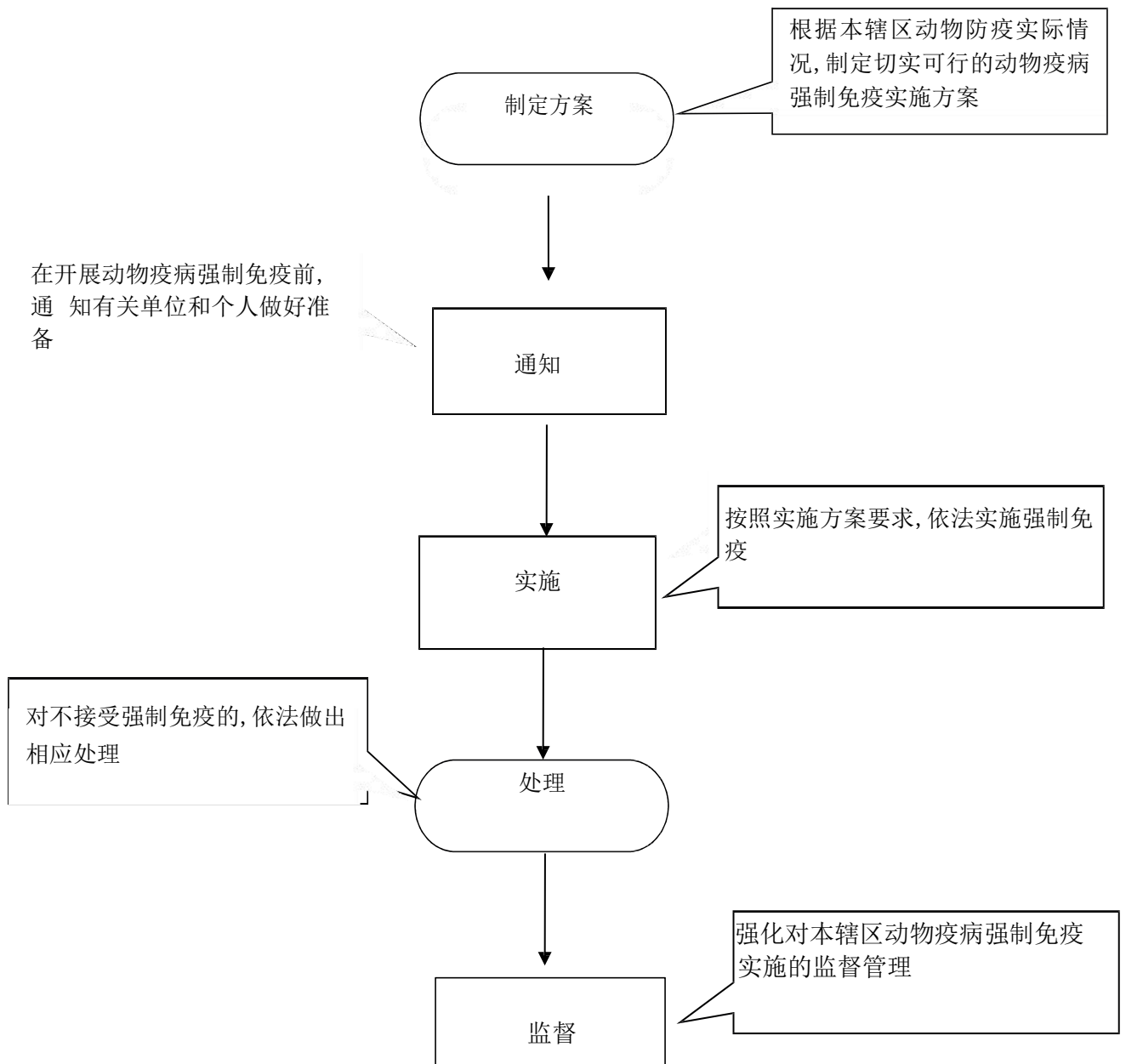
2-1、行政强制类权力运行流程图（5-7）



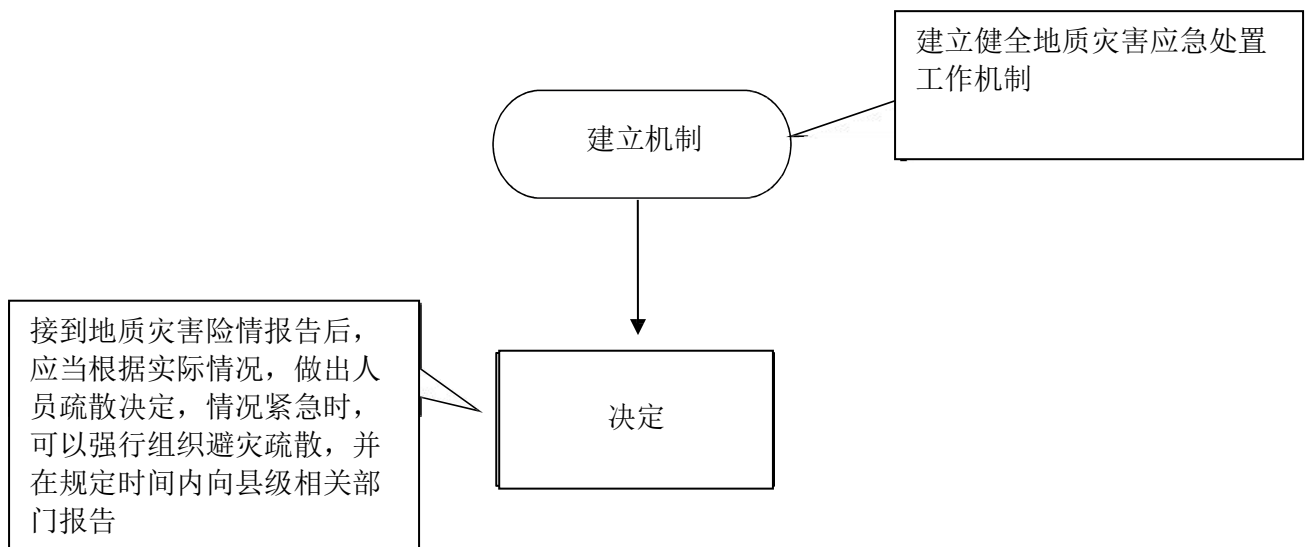
2-2、行政强制类权力运行流程图（8）



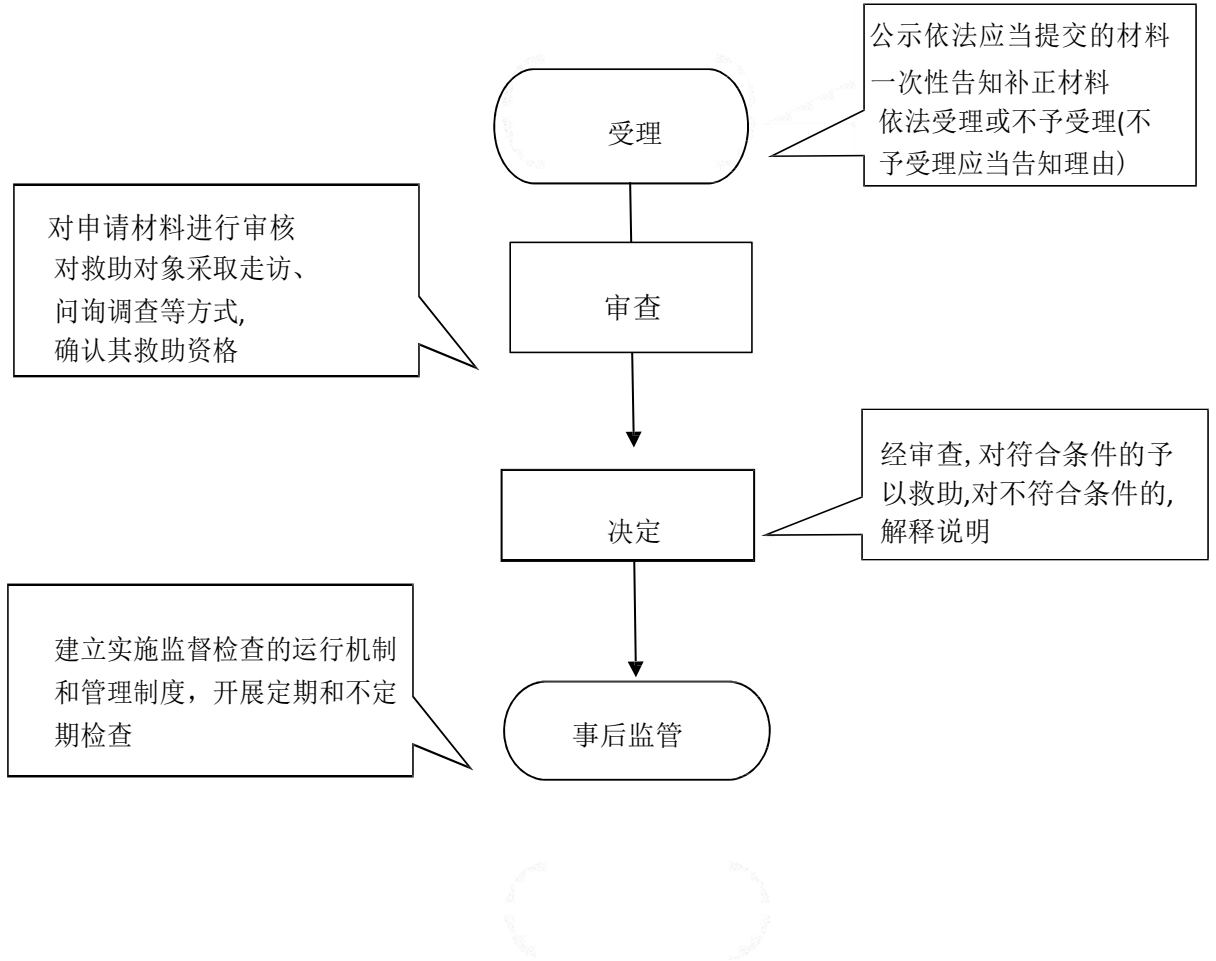
2-3、行政强制类权力运行流程图（9）



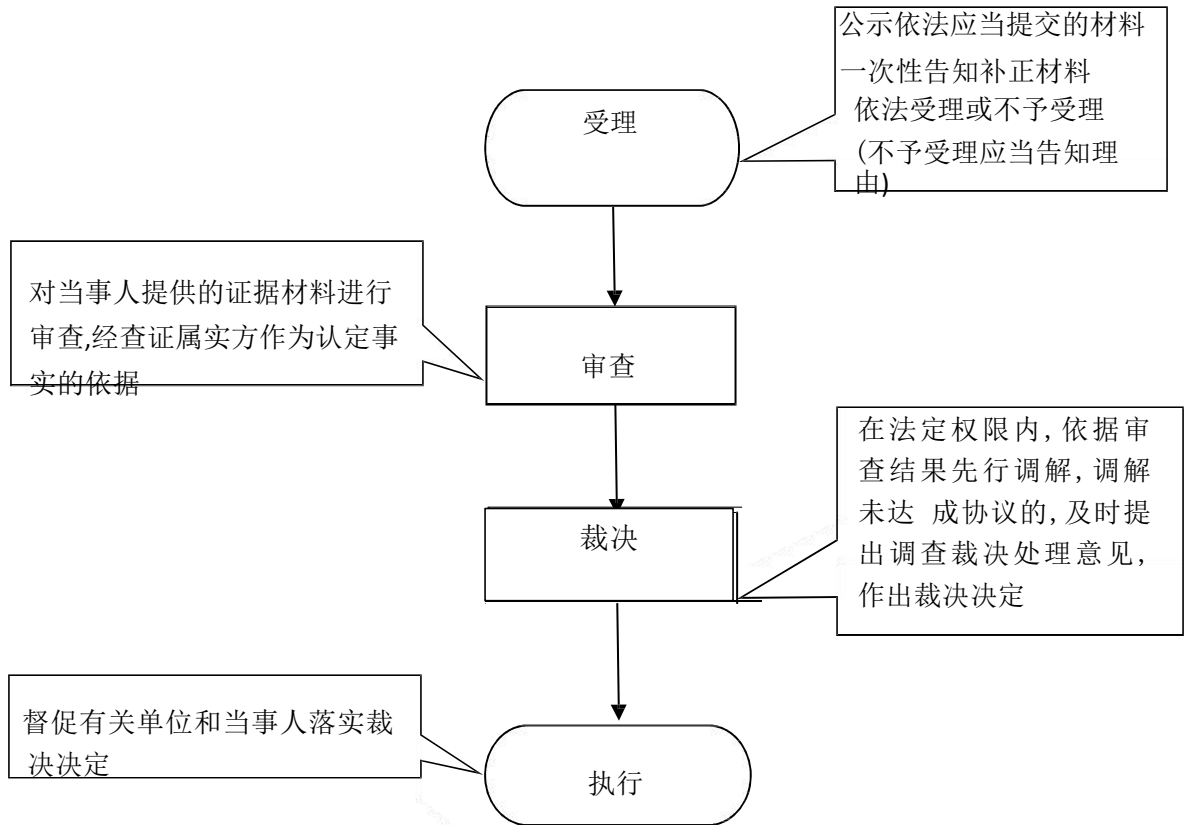
2-4、行政强制类权力运行流程图（10）



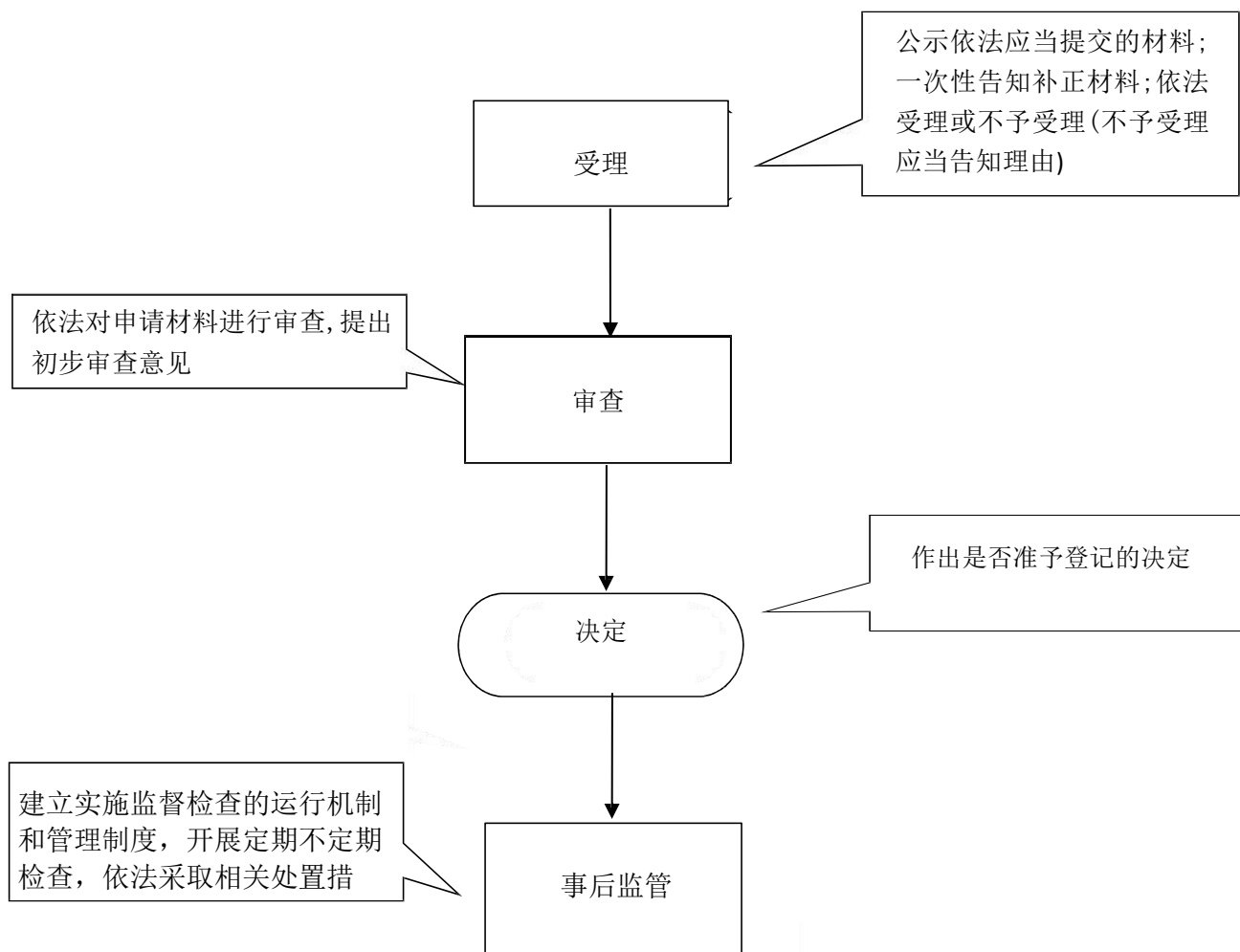
3、行政给付类权力运行流程图（11-15）



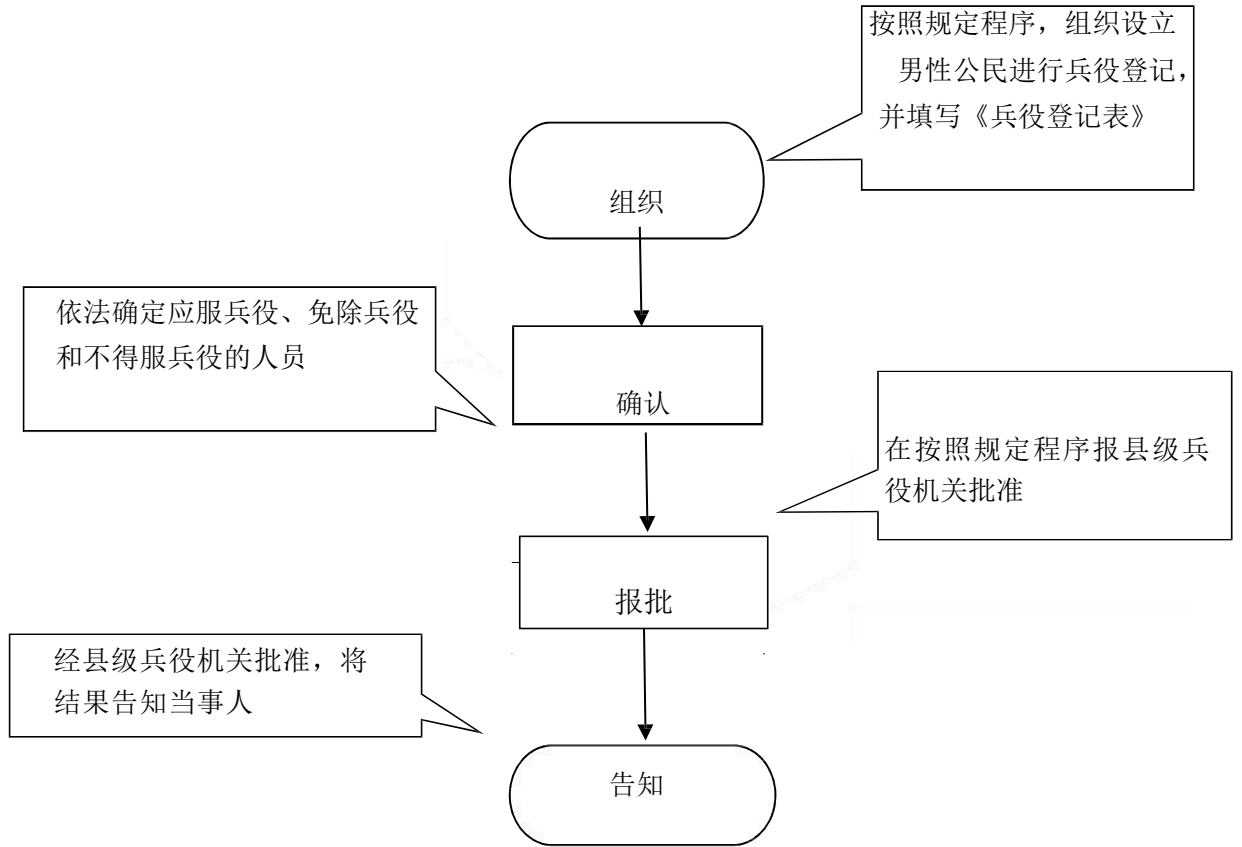
4、行政裁决类权力运行流程图（16-18）



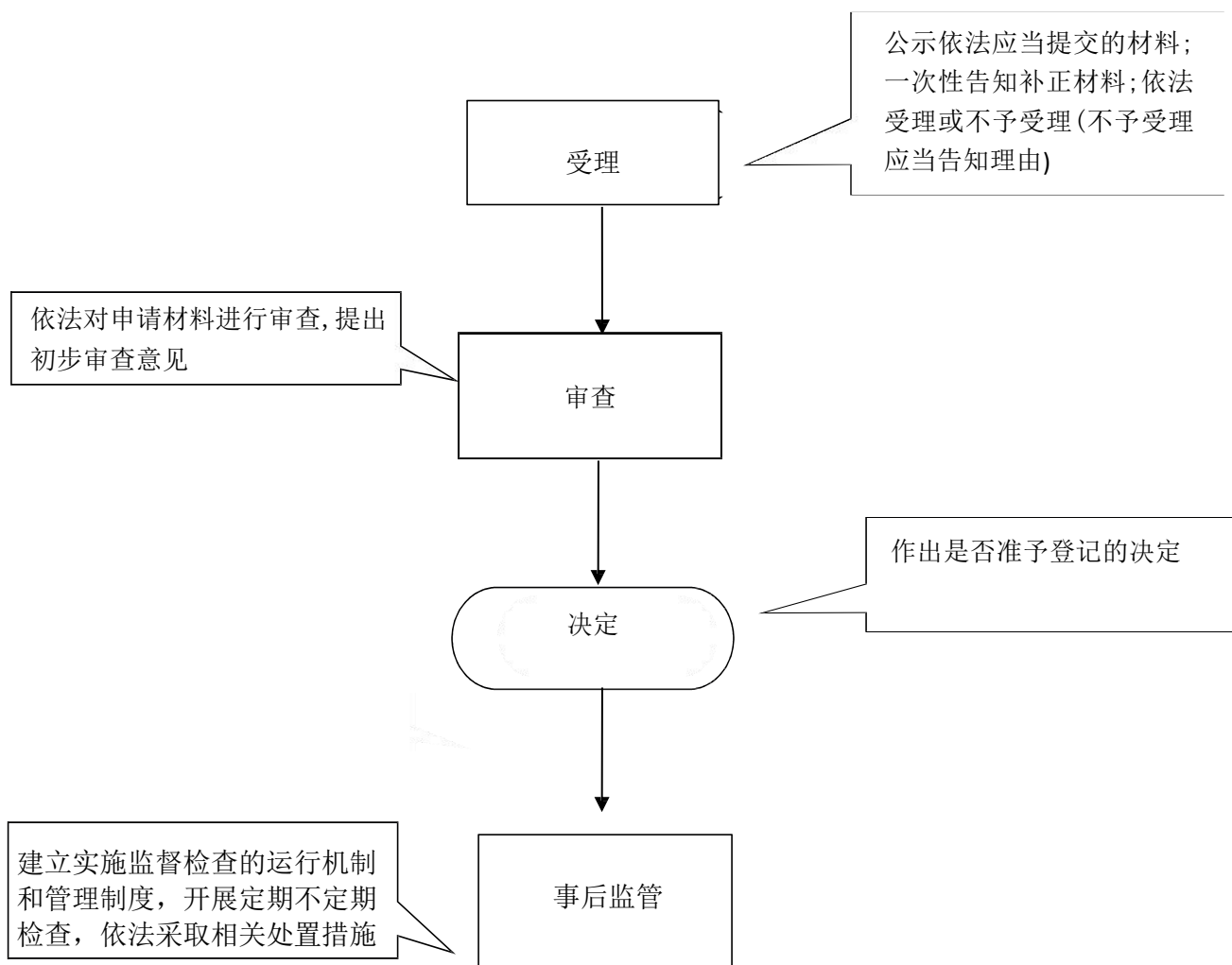
6、行政确认类行政权力运行流程图 (19-21)



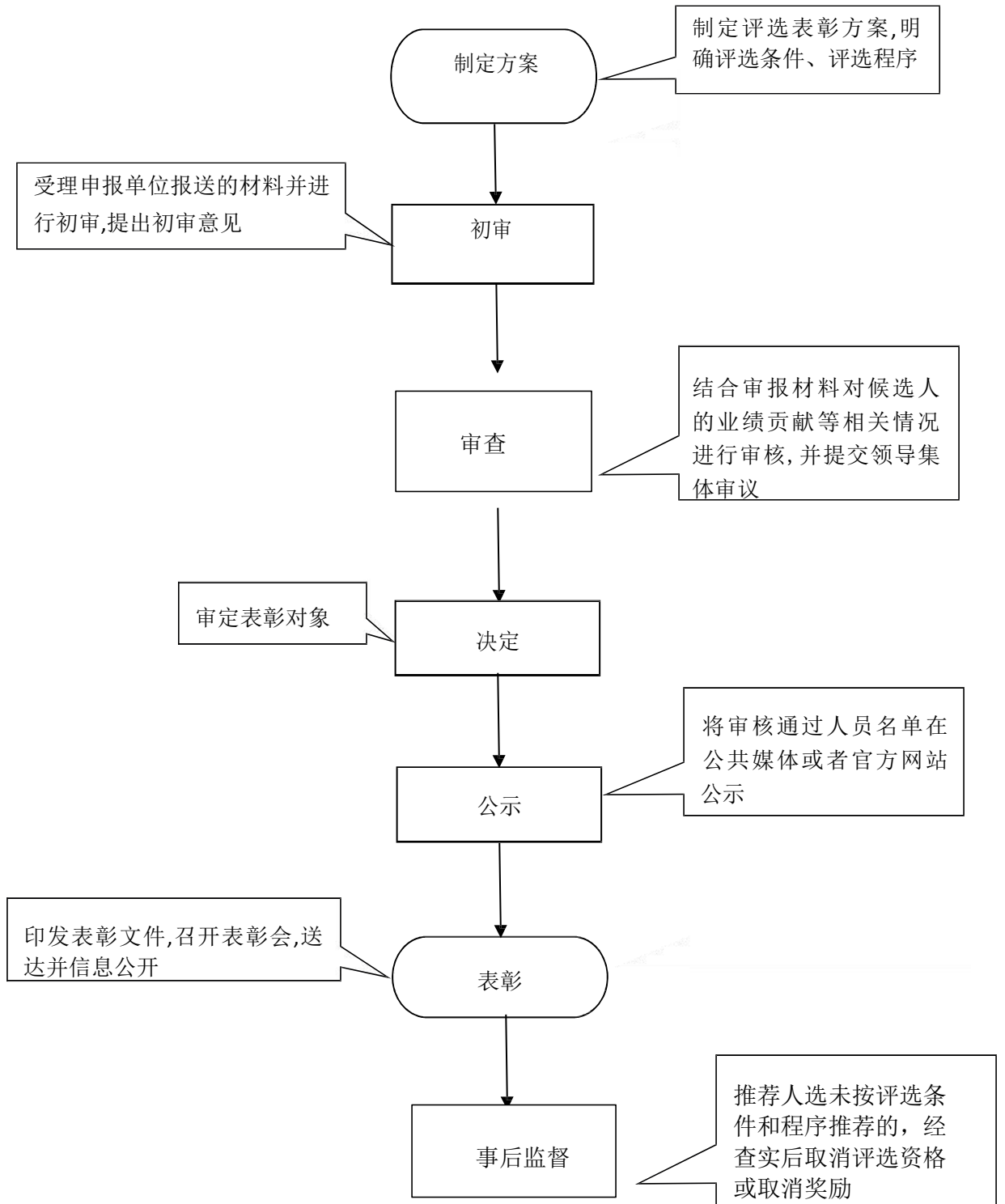
(22)



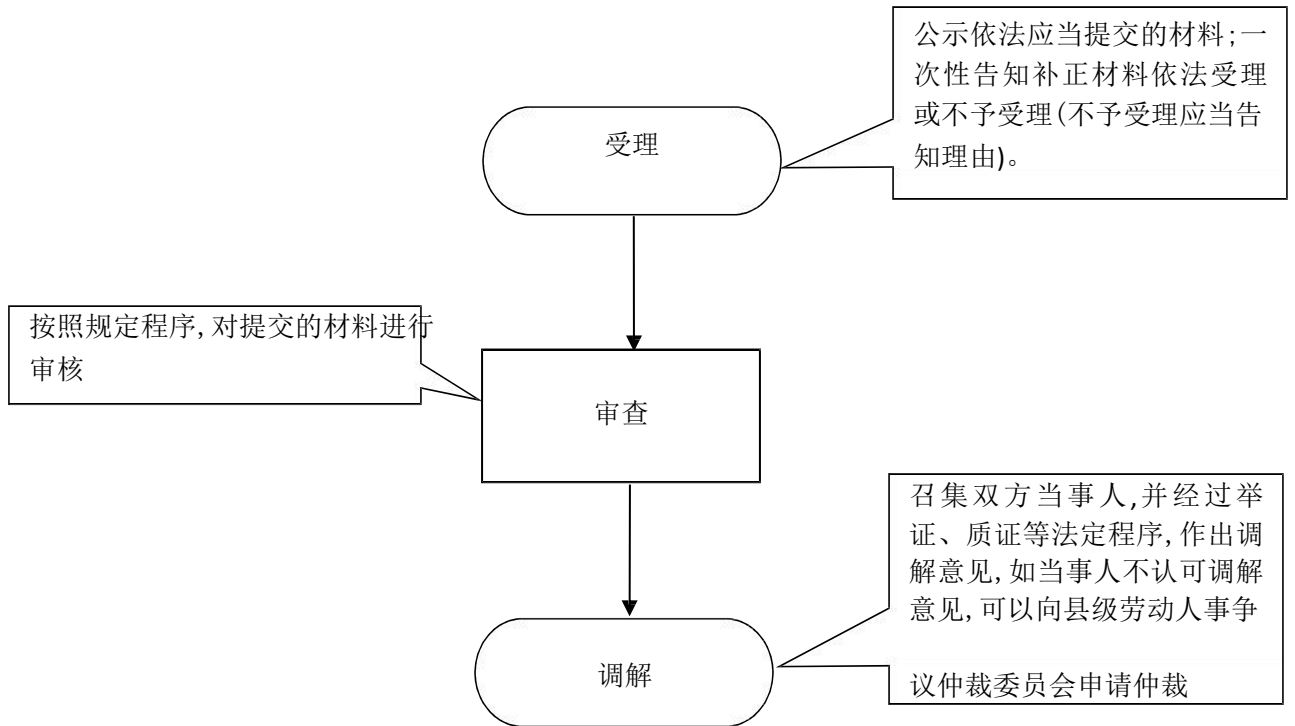
(23-24)



7、行政奖励类权力运行流程图（25-30）

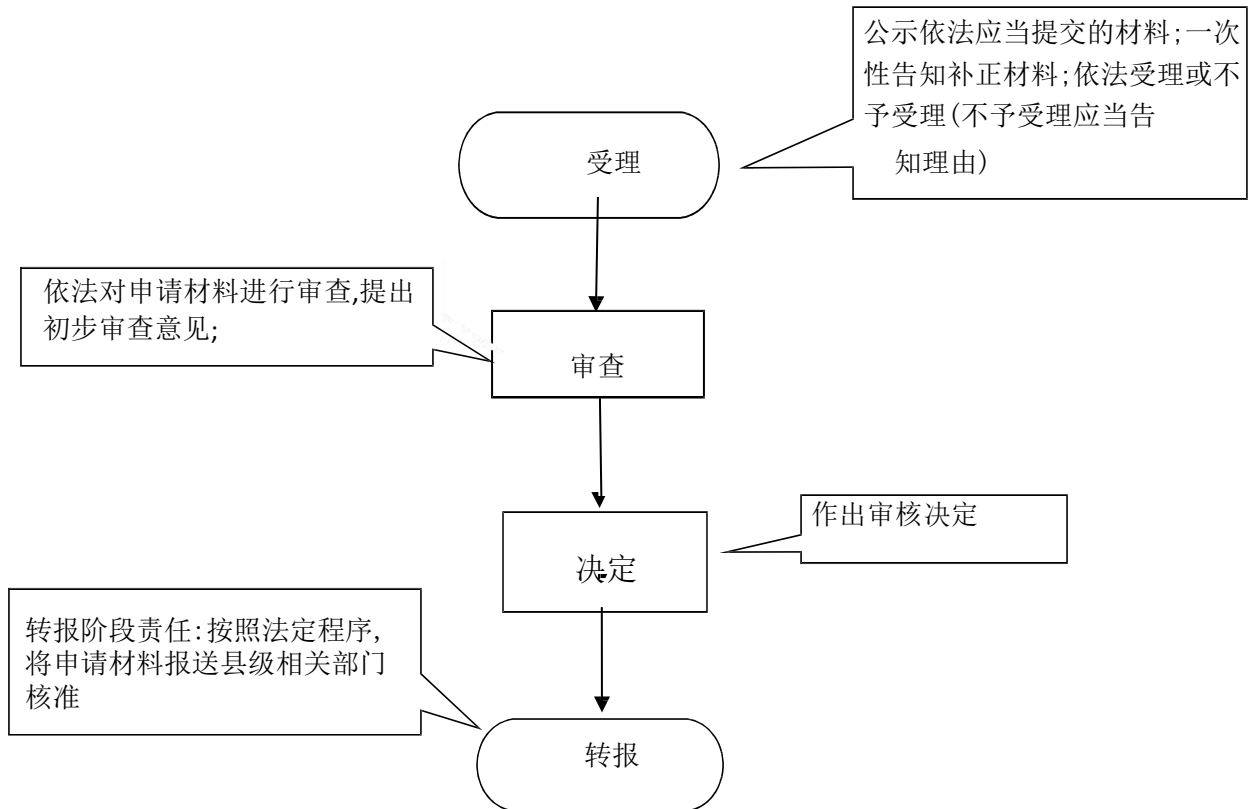


8、行政调解类权力运行流程图（31-35）

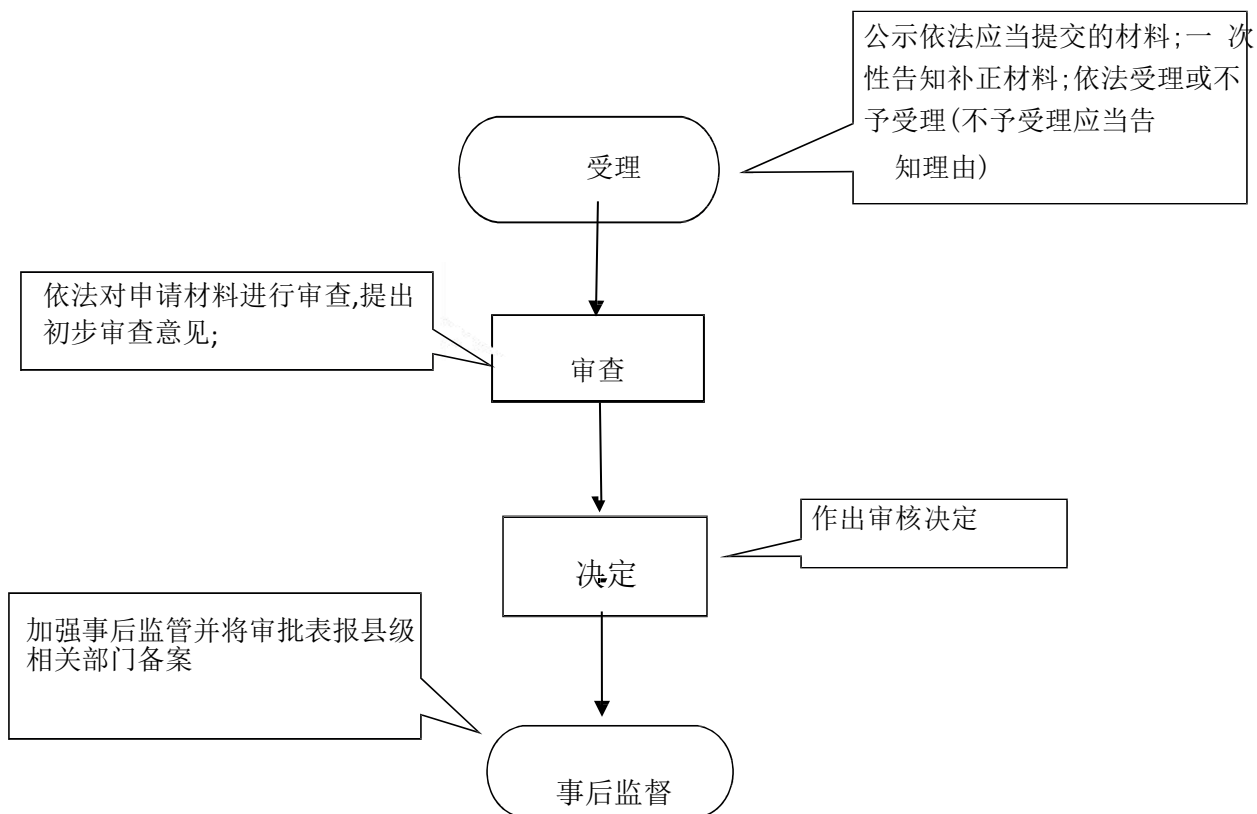


9、其他类行政权力运行流程图

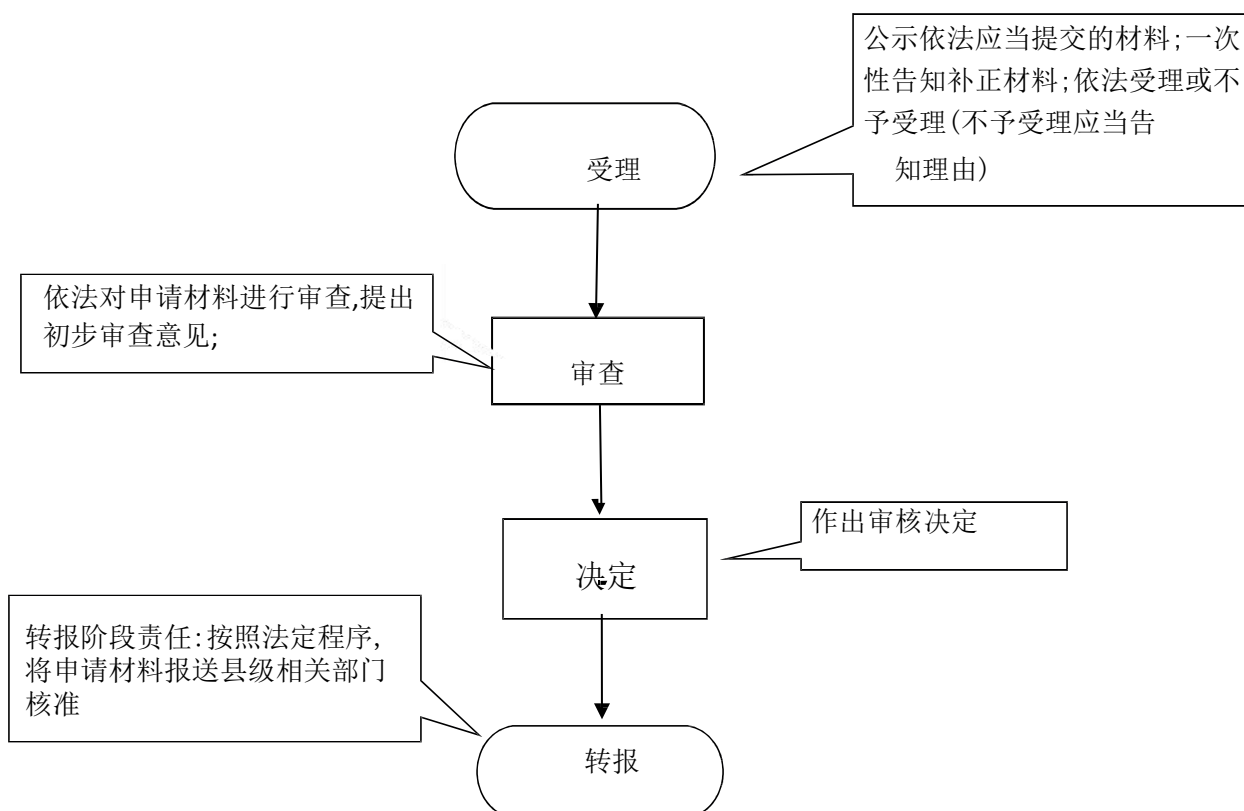
(36-39)



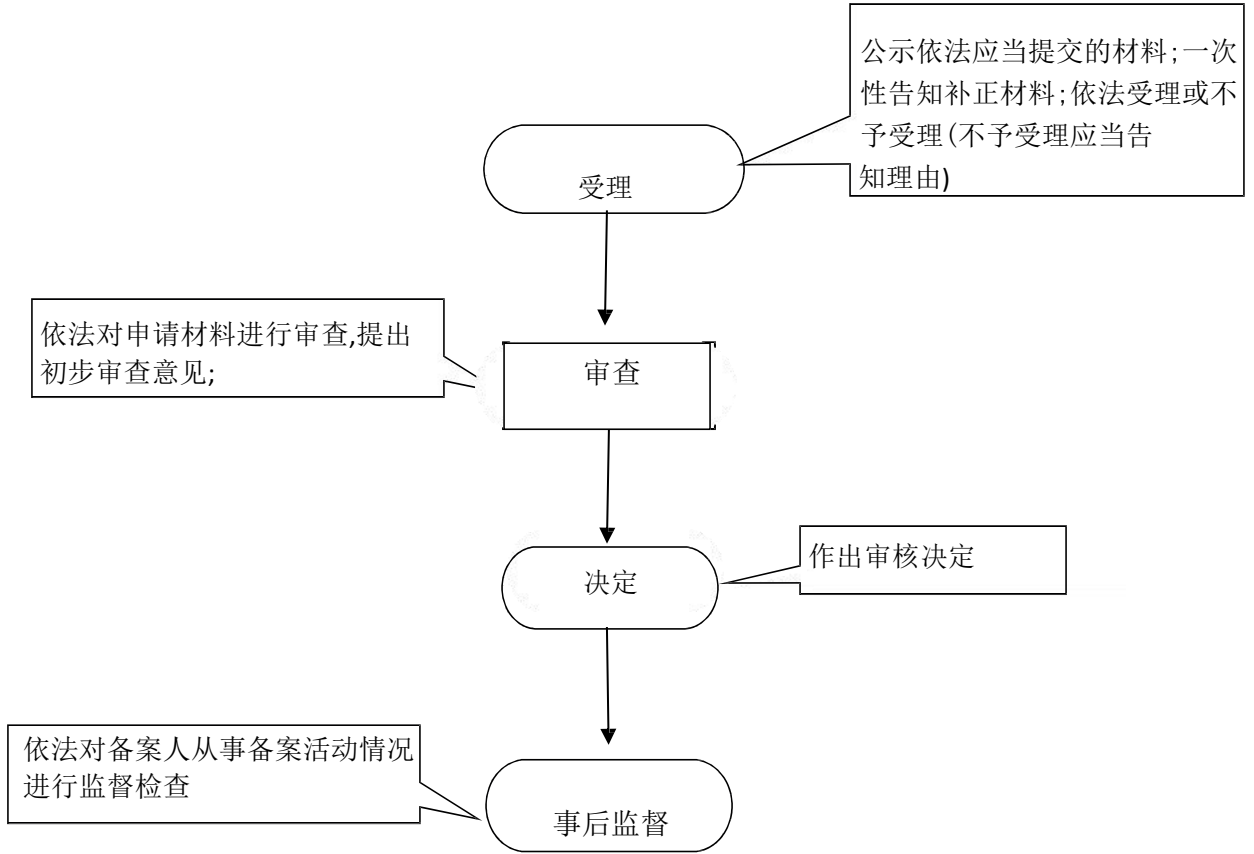
(40-41)



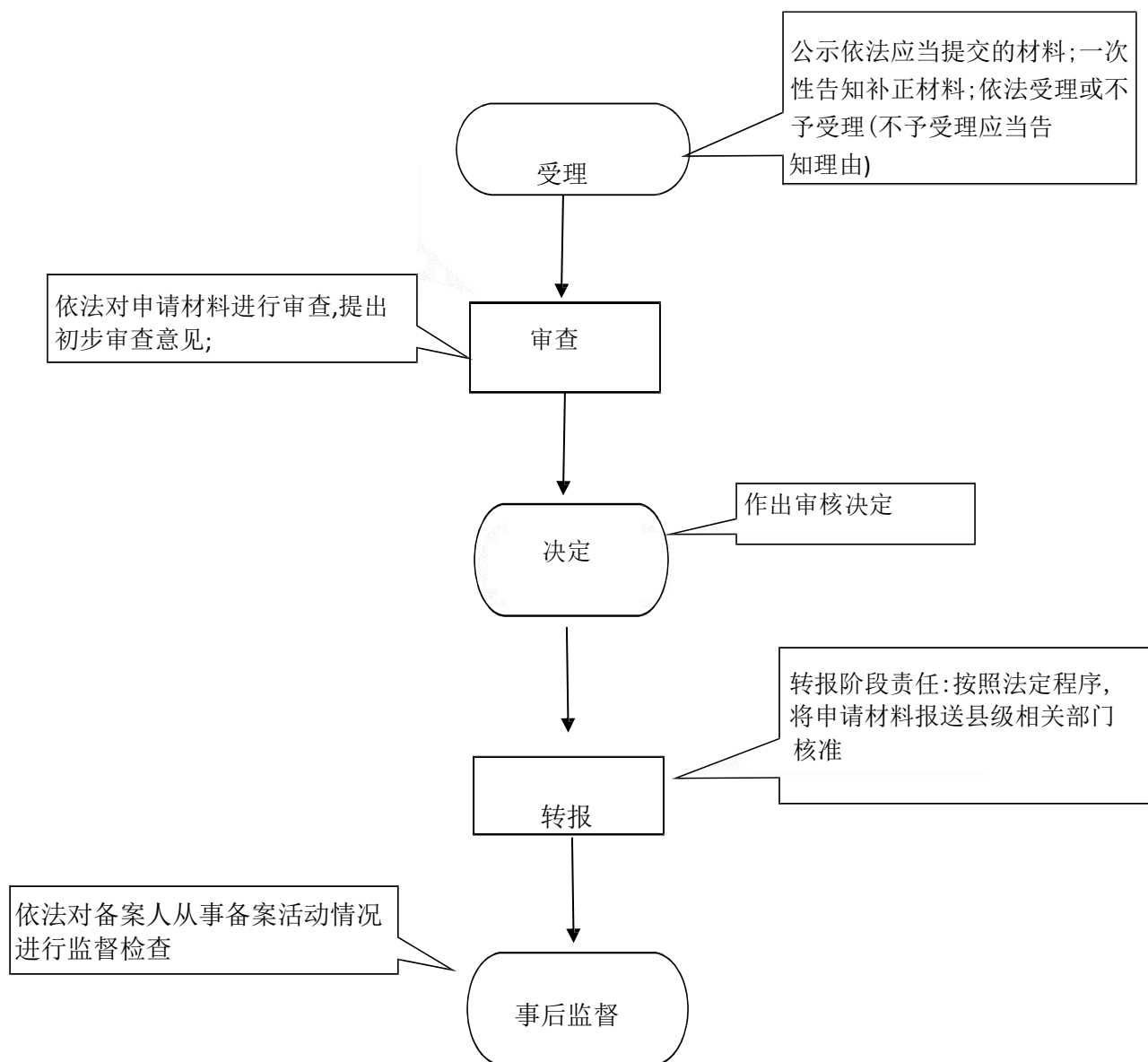
(42-43)



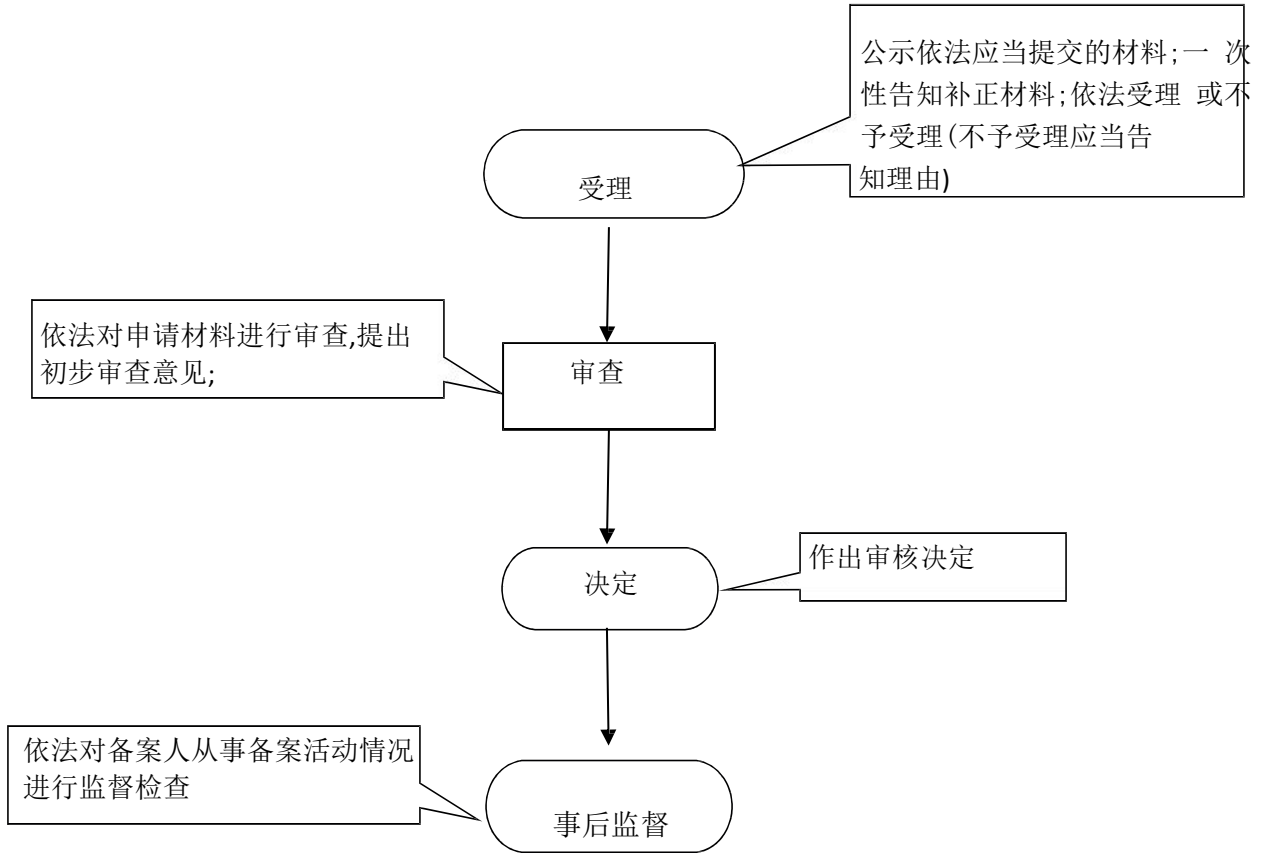
(44-45)



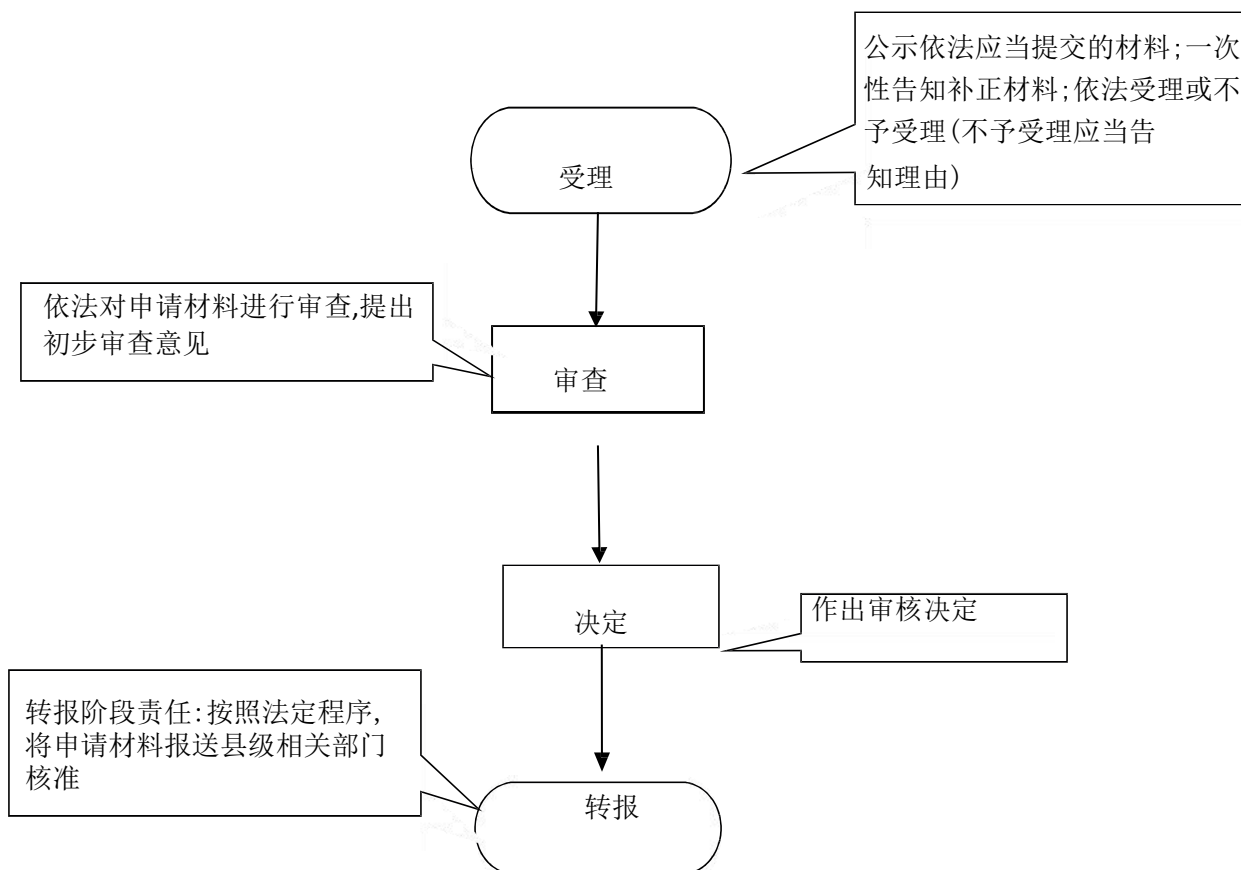
(46)



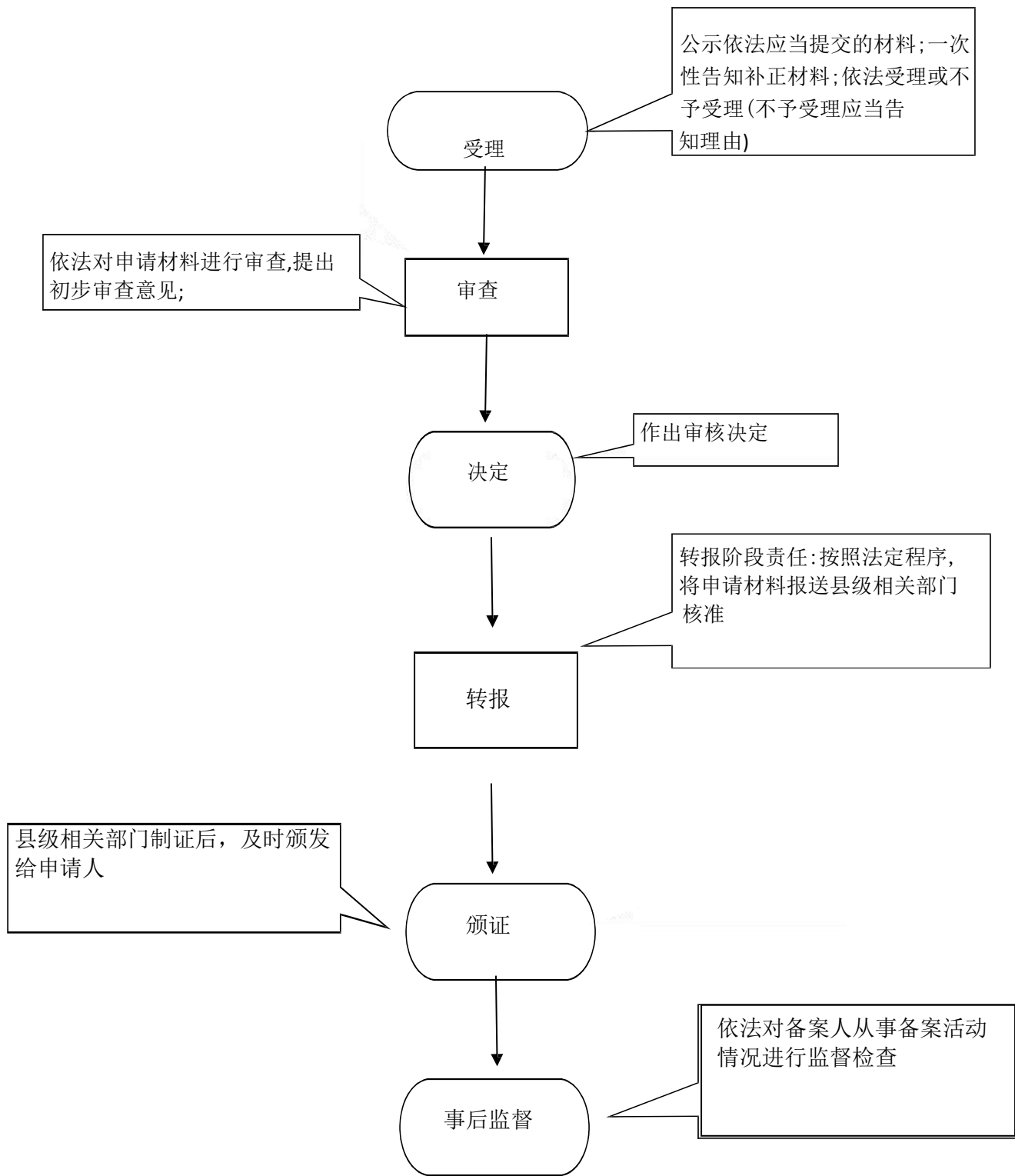
(47)



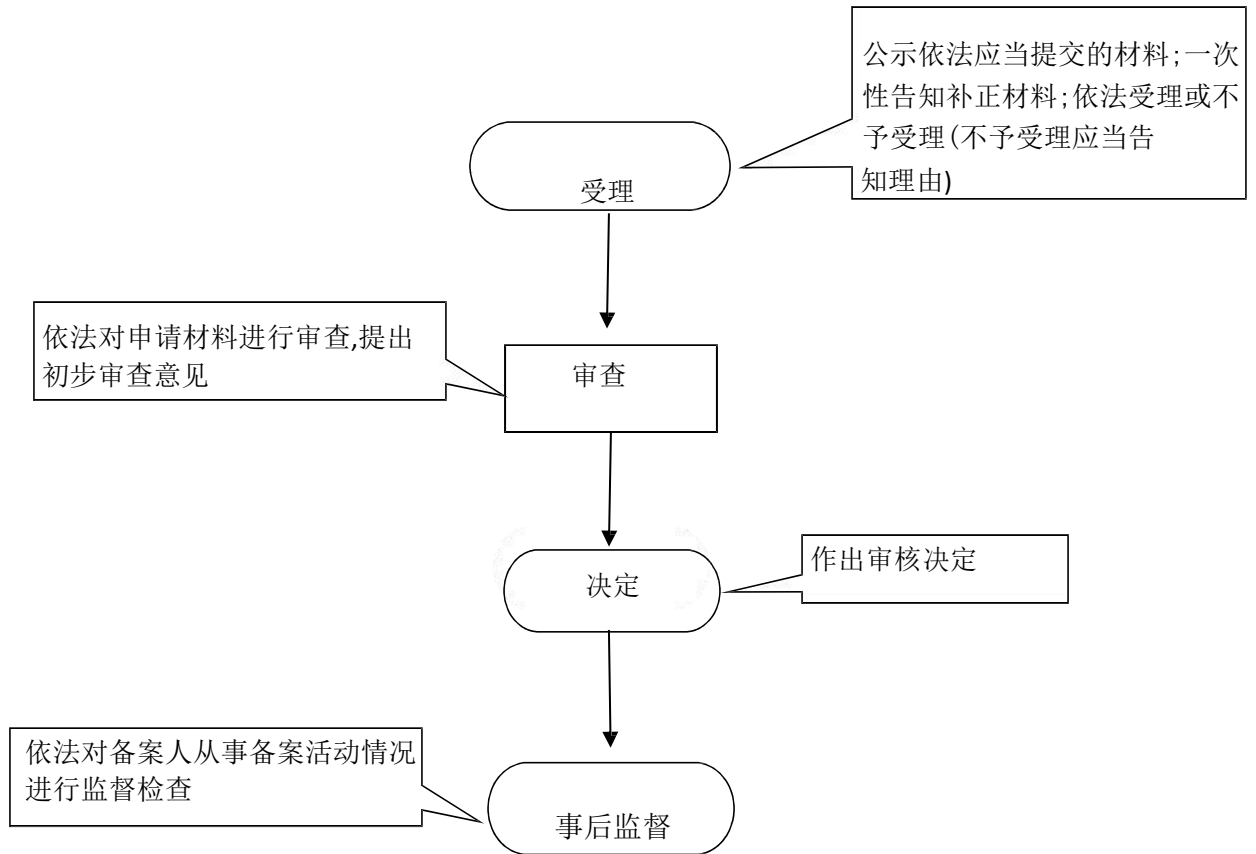
(48)



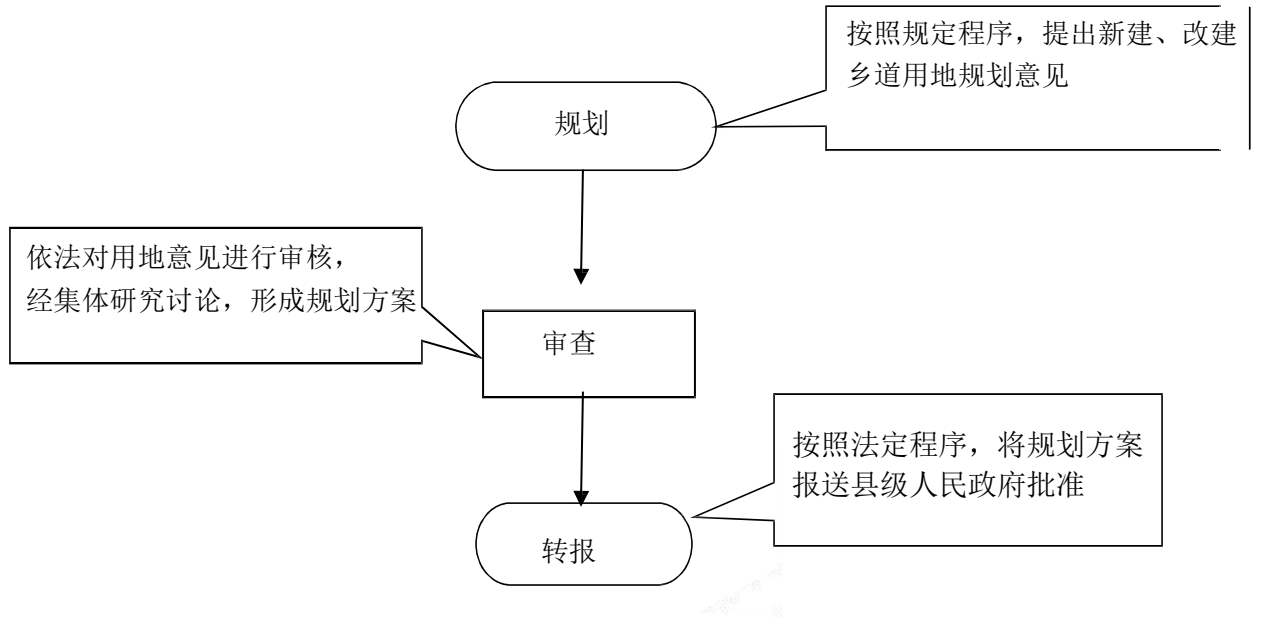
(49)



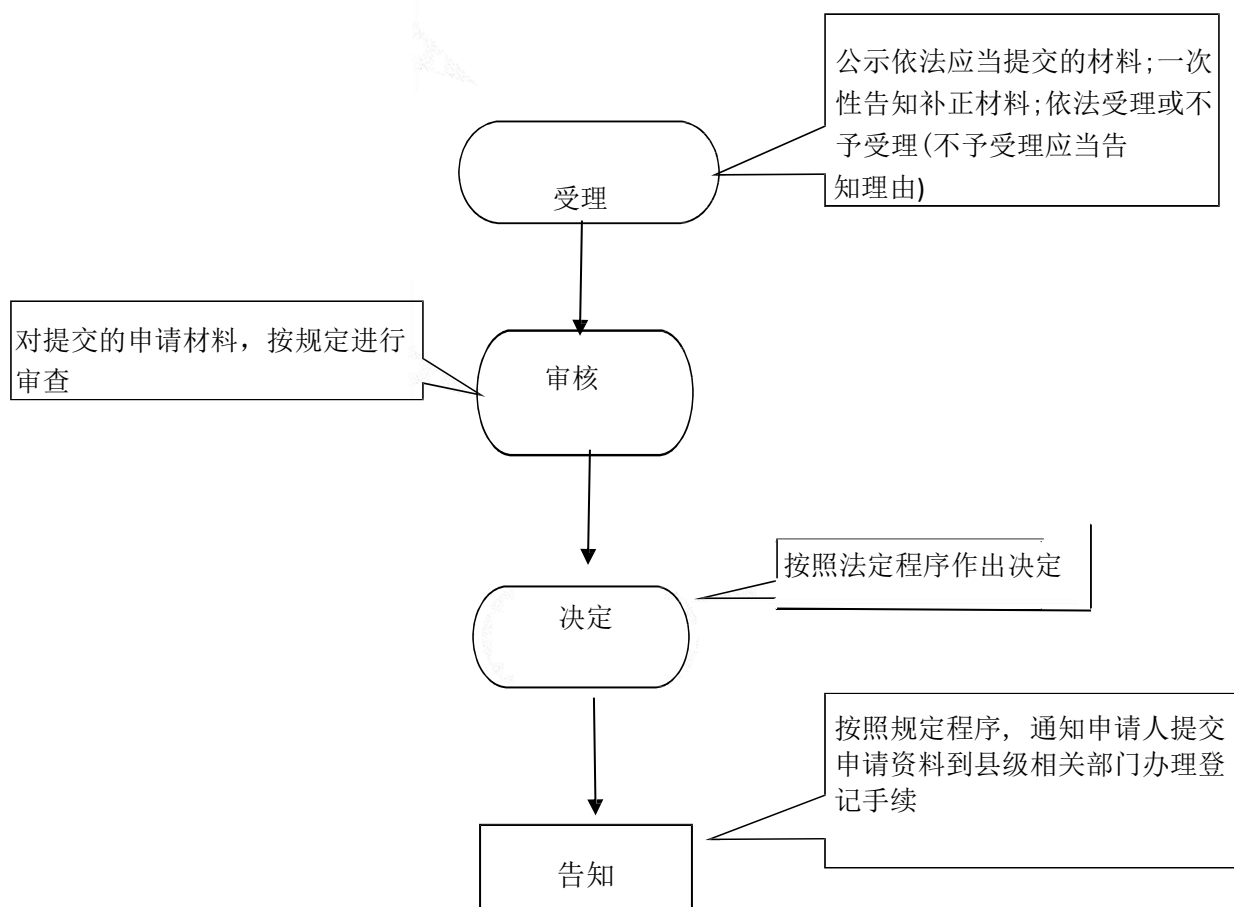
(50)



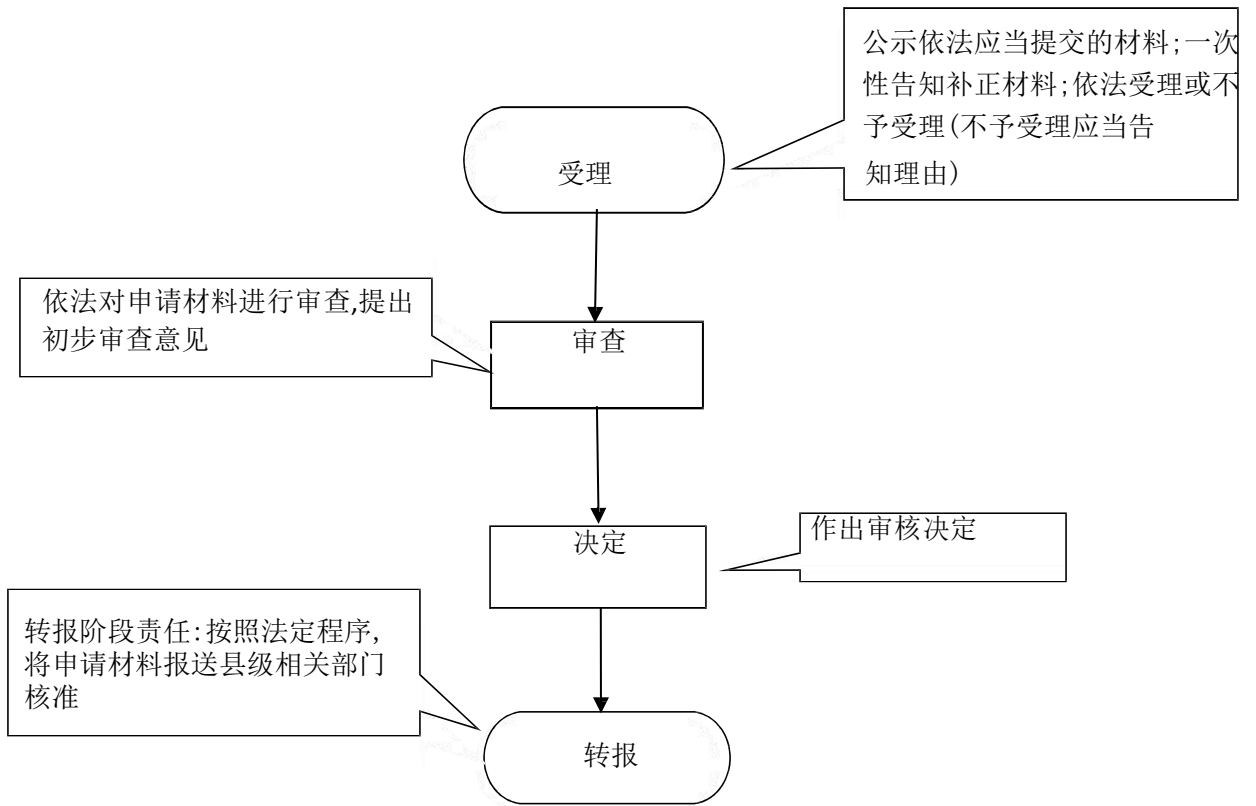
(51)



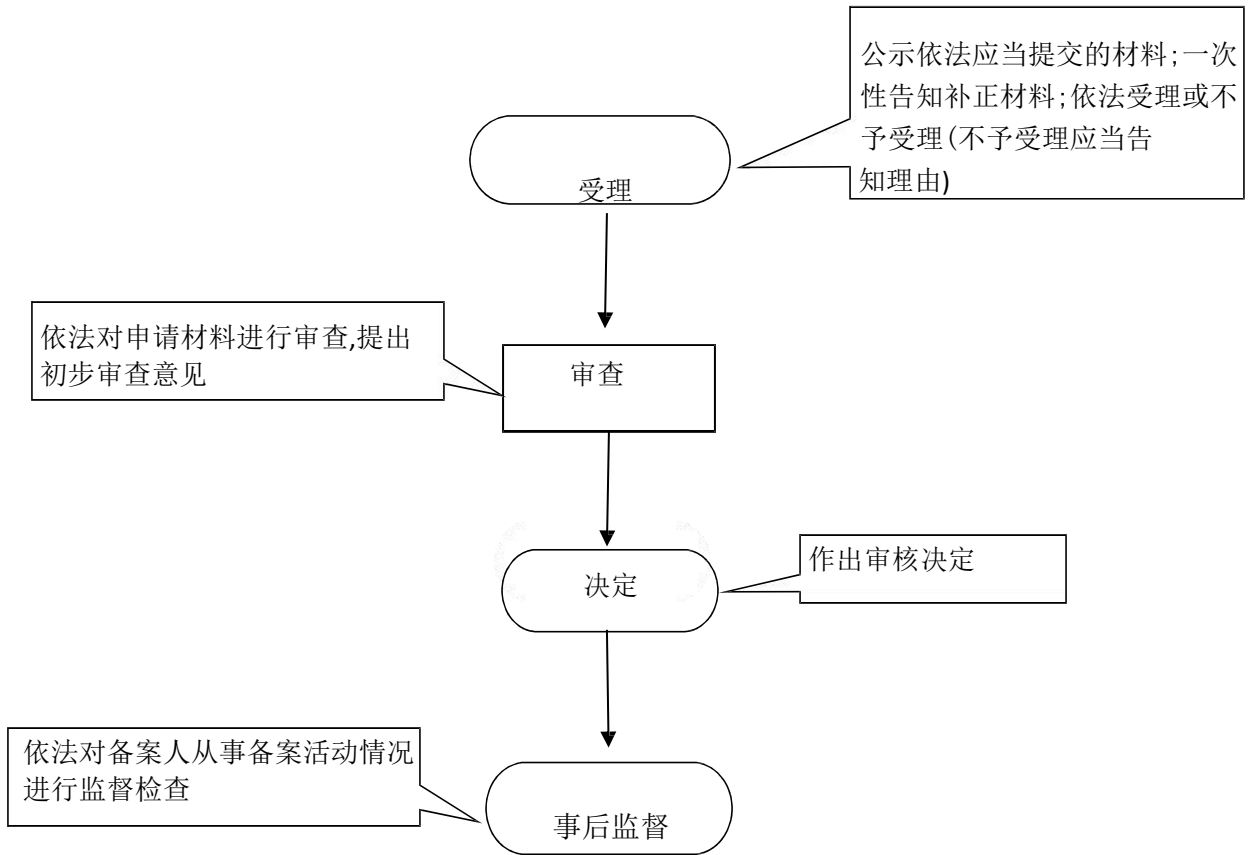
(52)



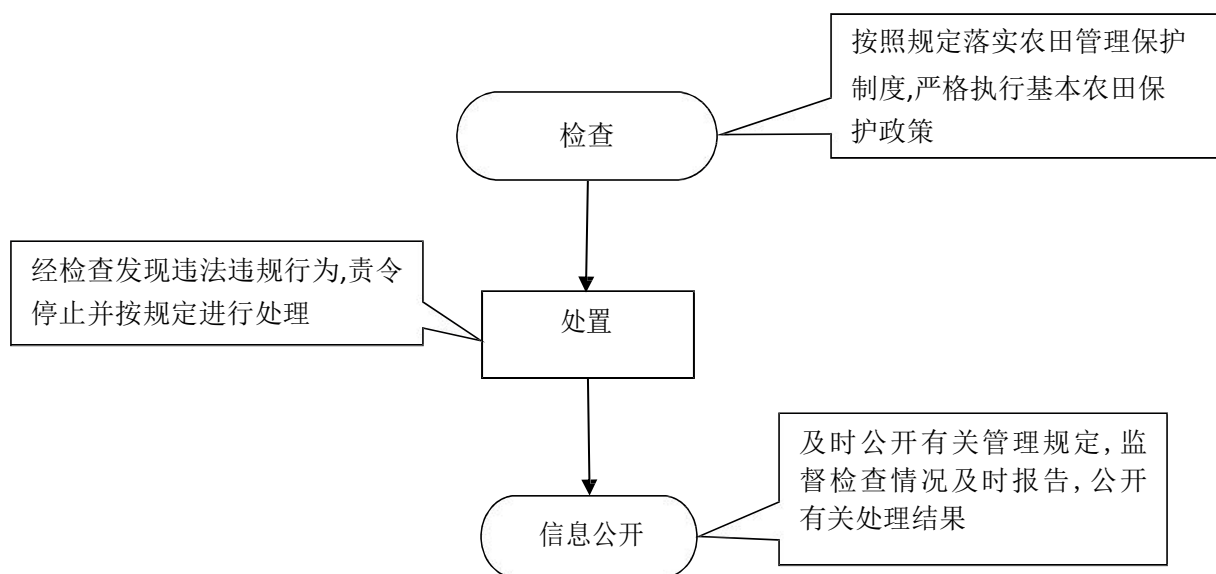
(53-54)



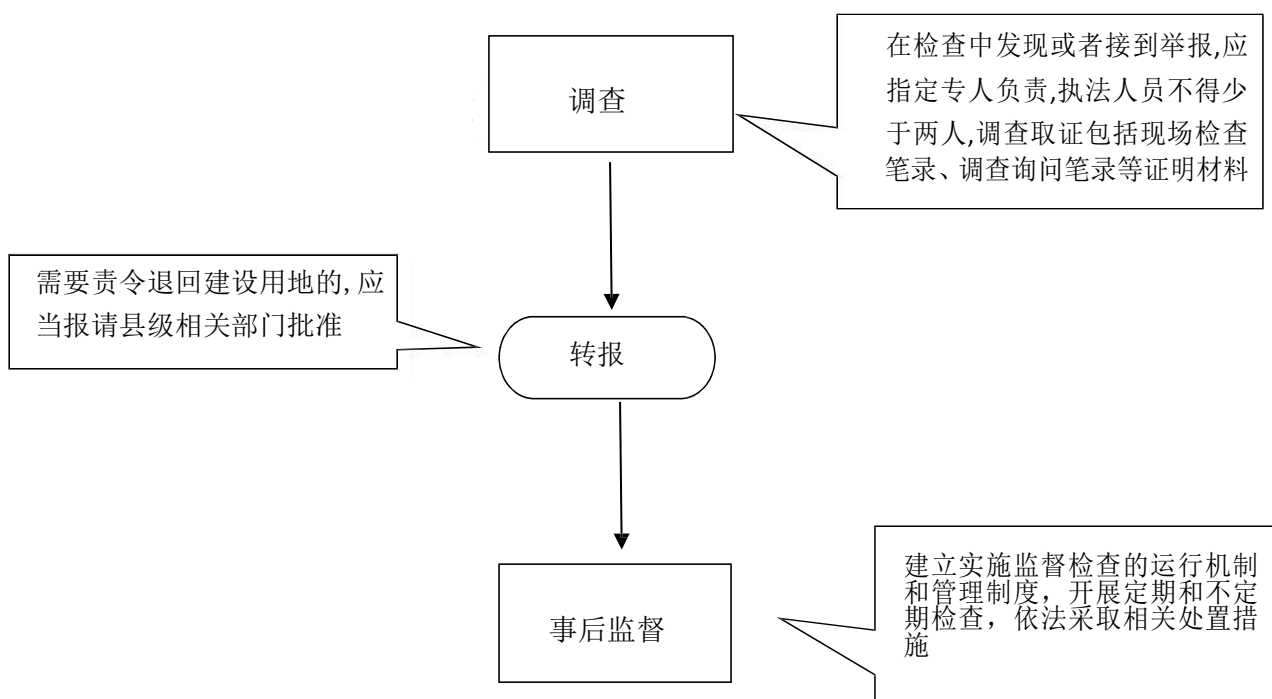
(55)



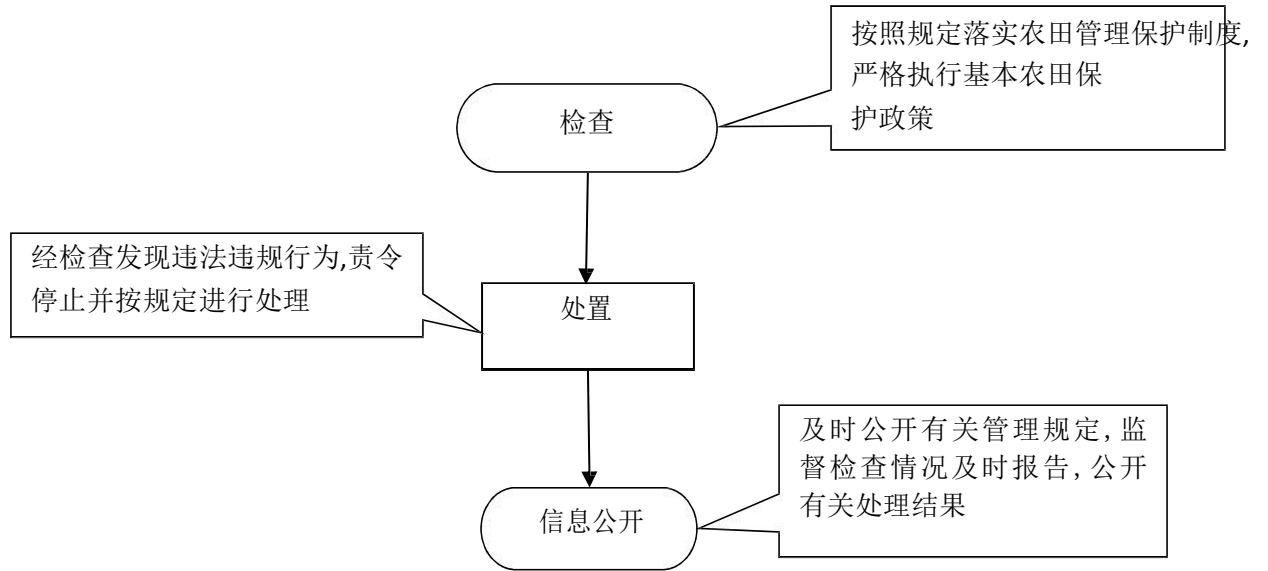
(56-57)



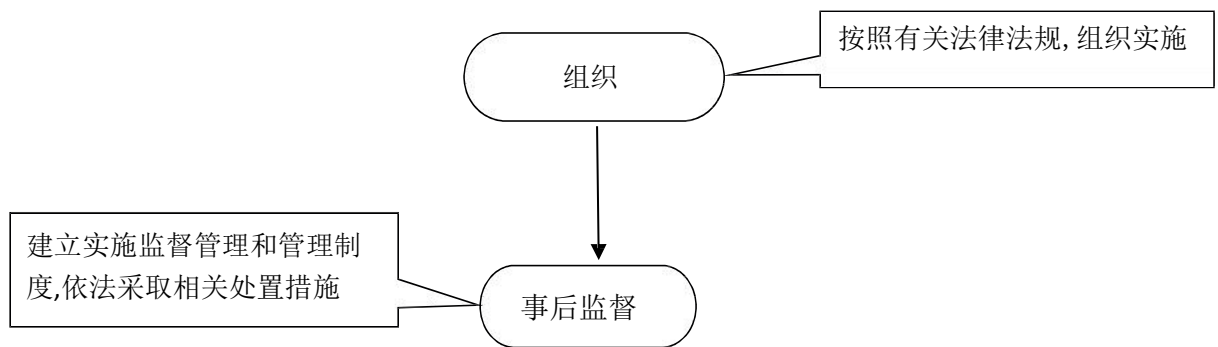
(58)



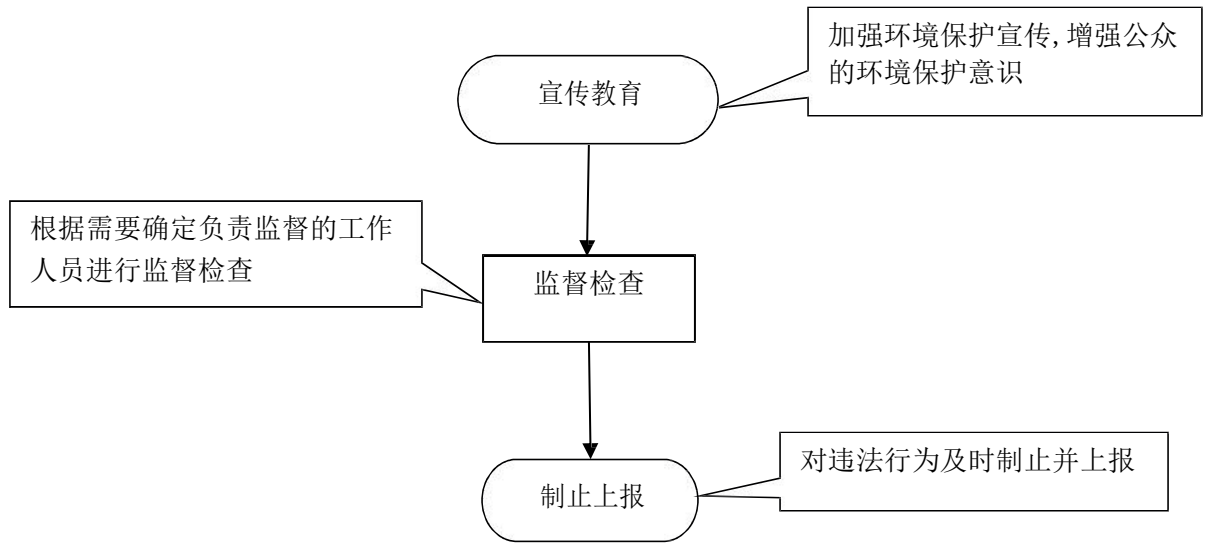
(59)



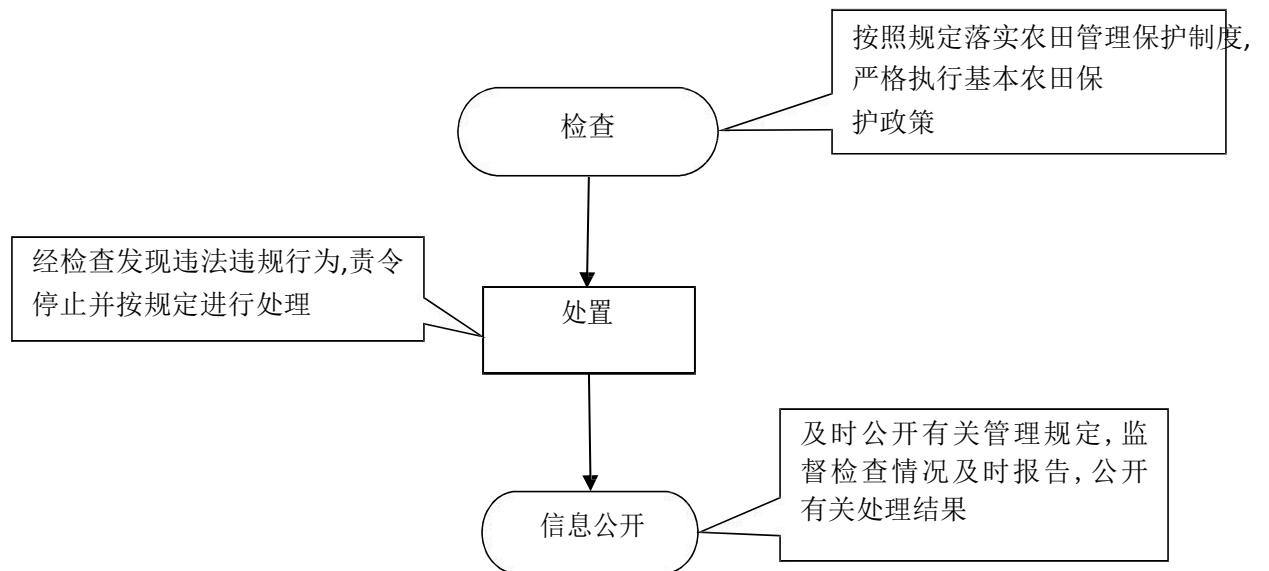
(60)



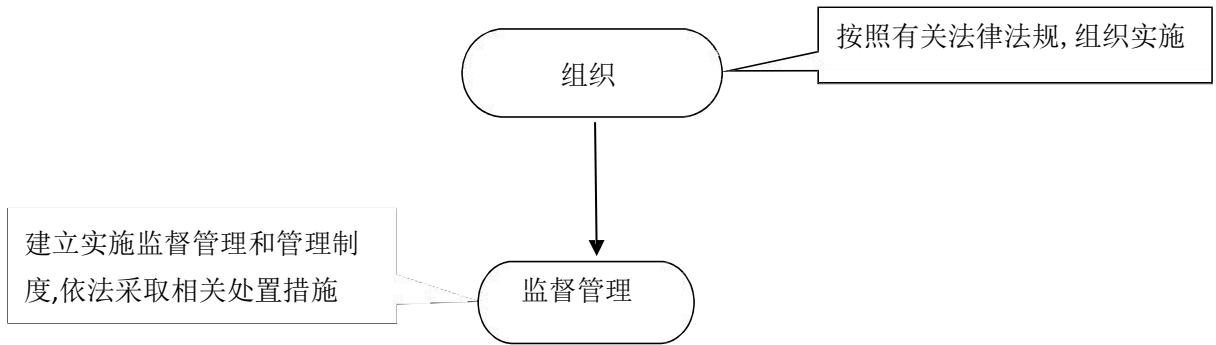
(61-62)



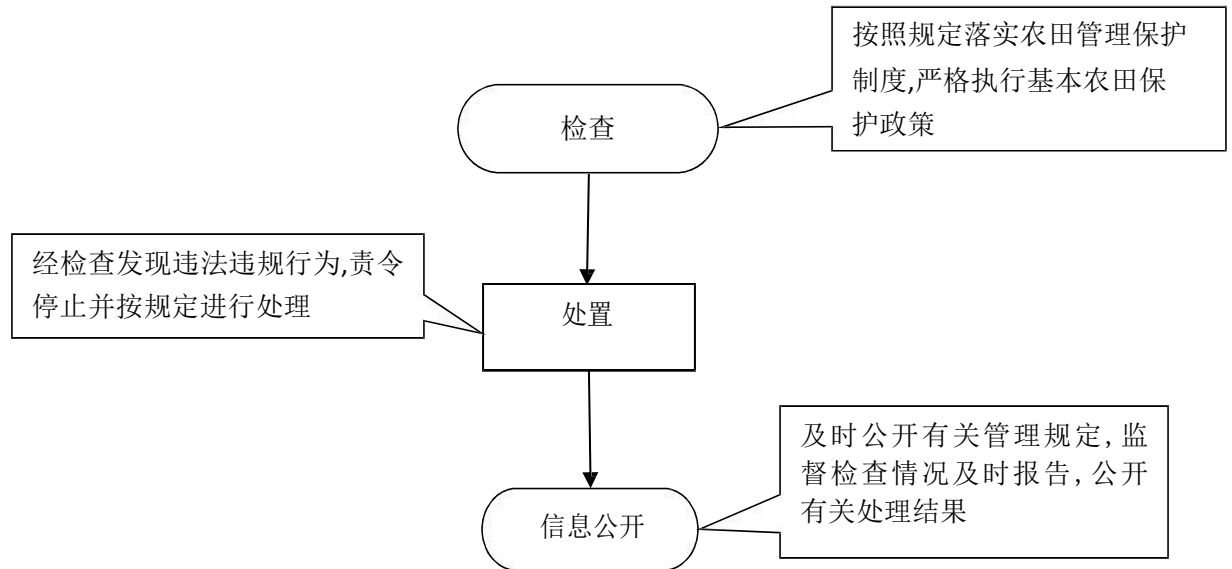
(63-64)



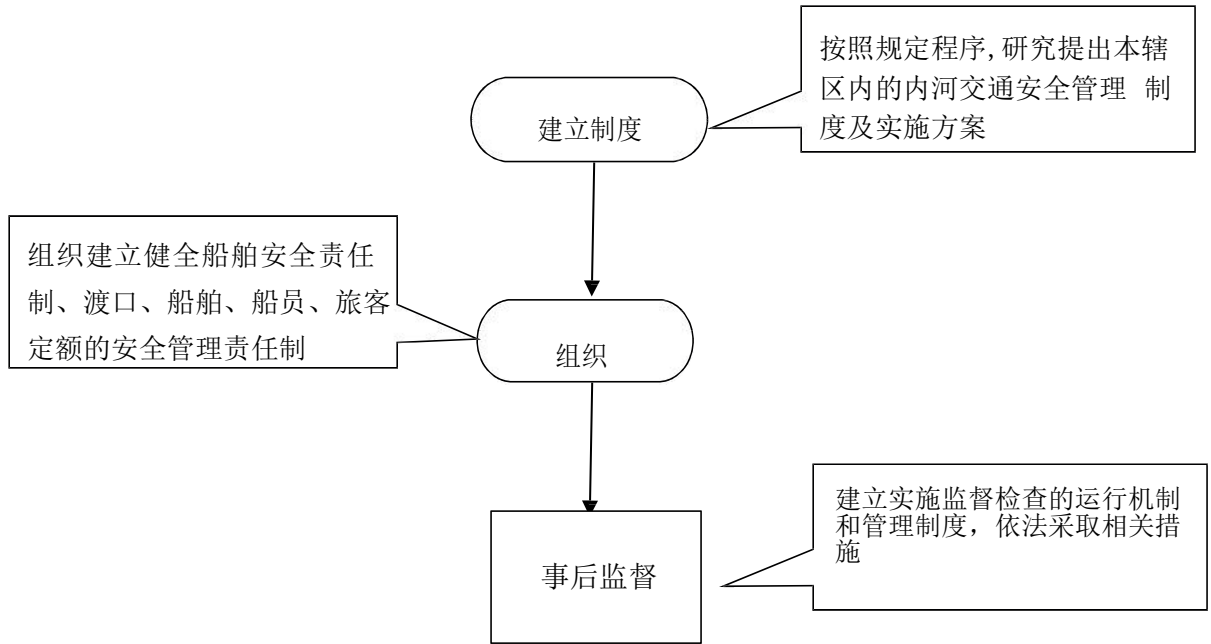
(65)



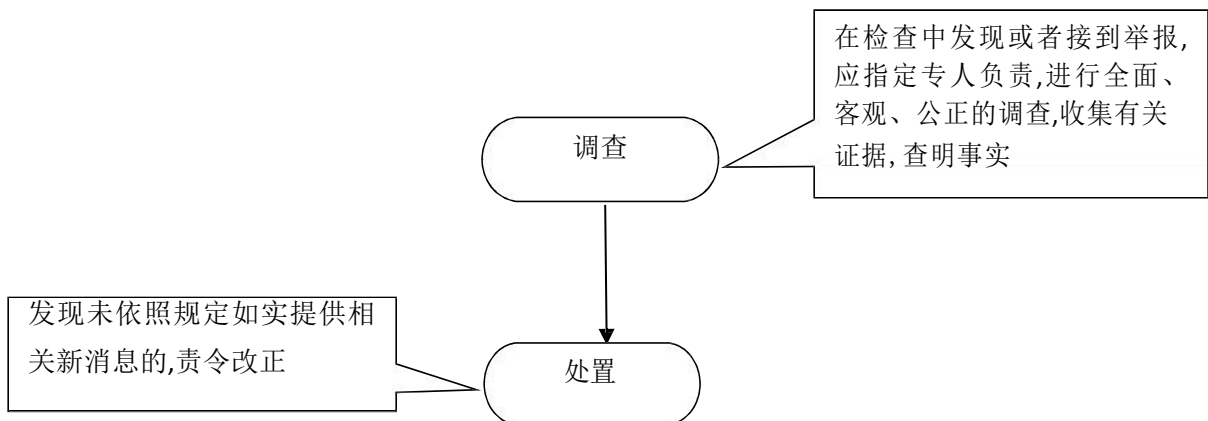
(66)



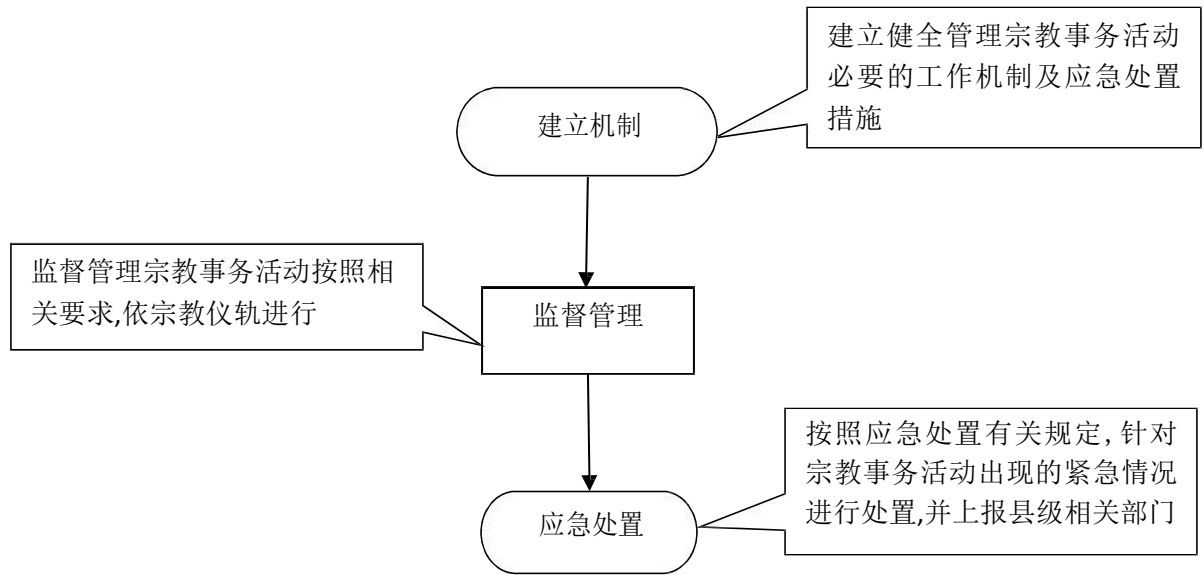
(67)



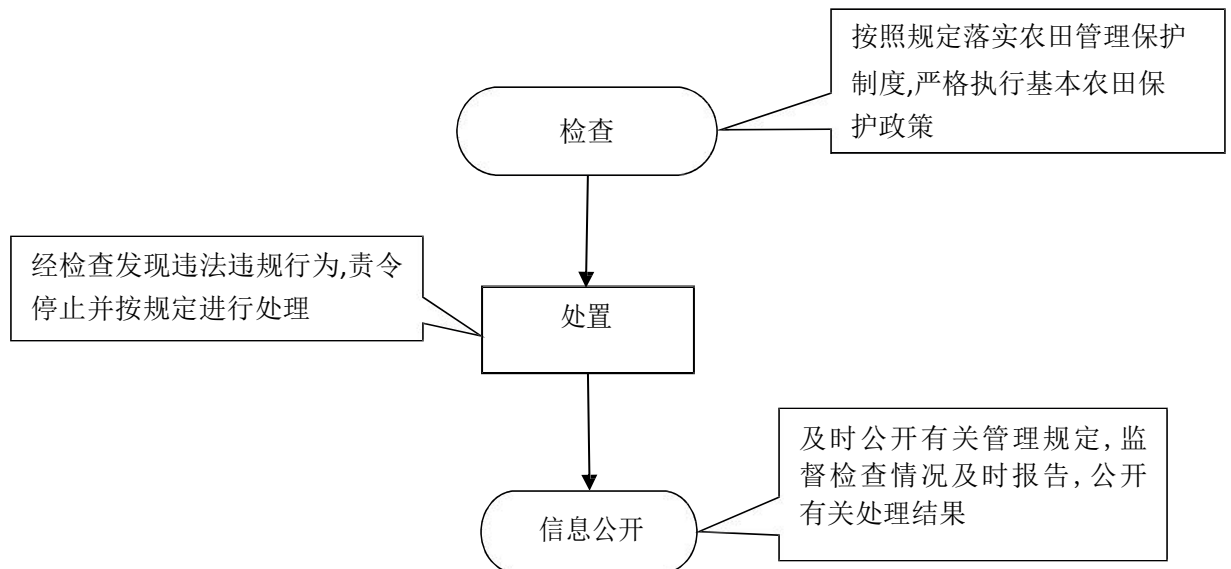
(68)



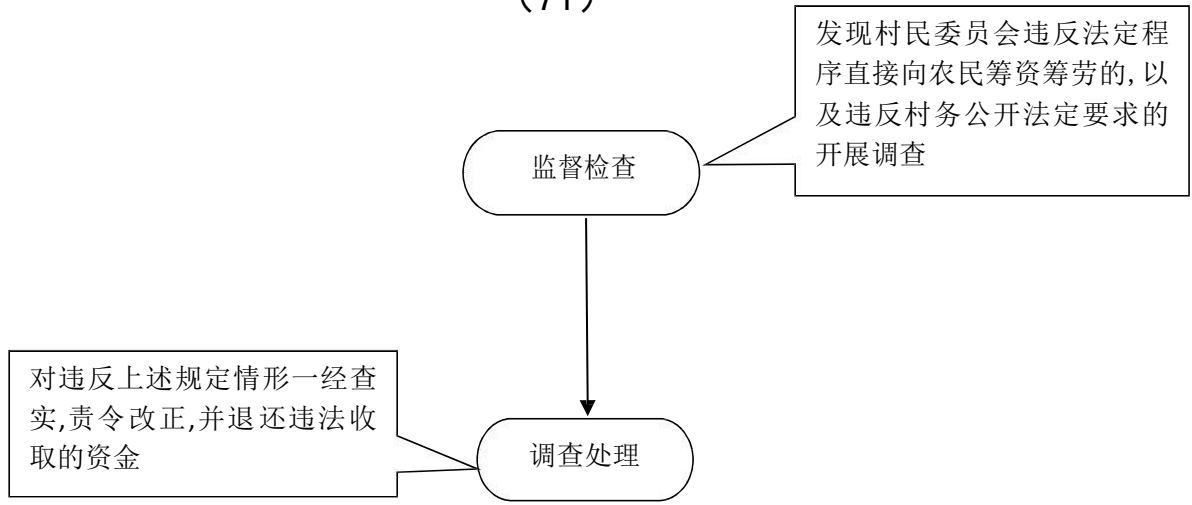
(69)



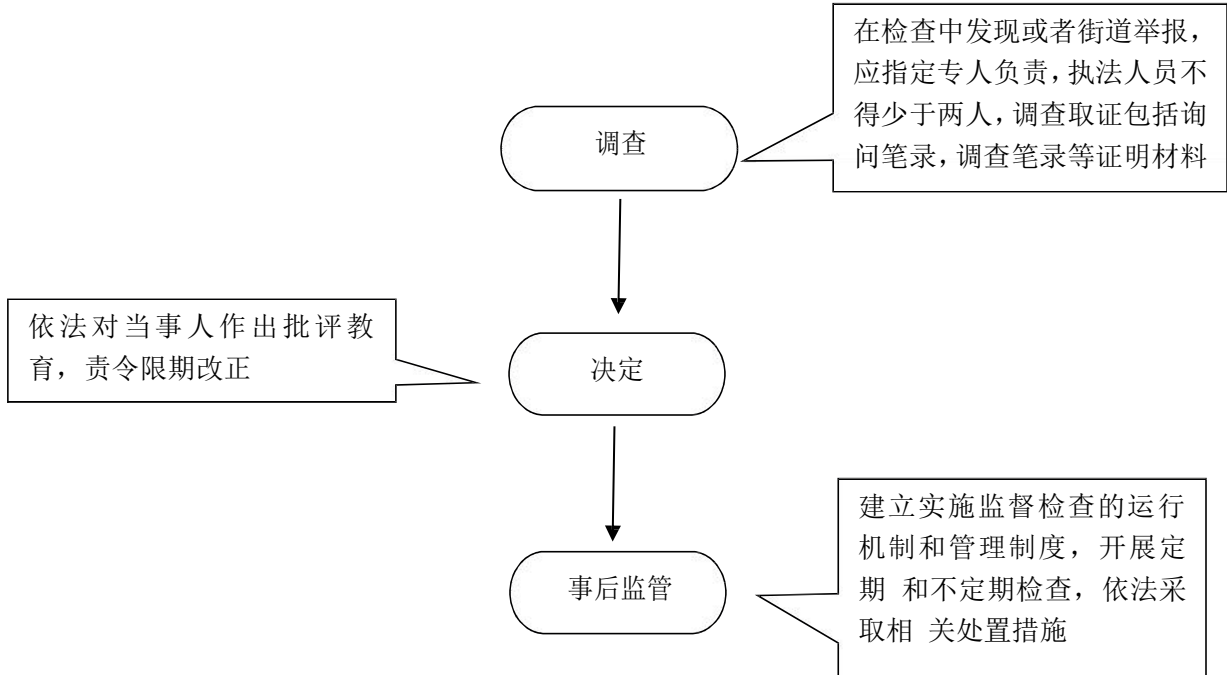
(70)



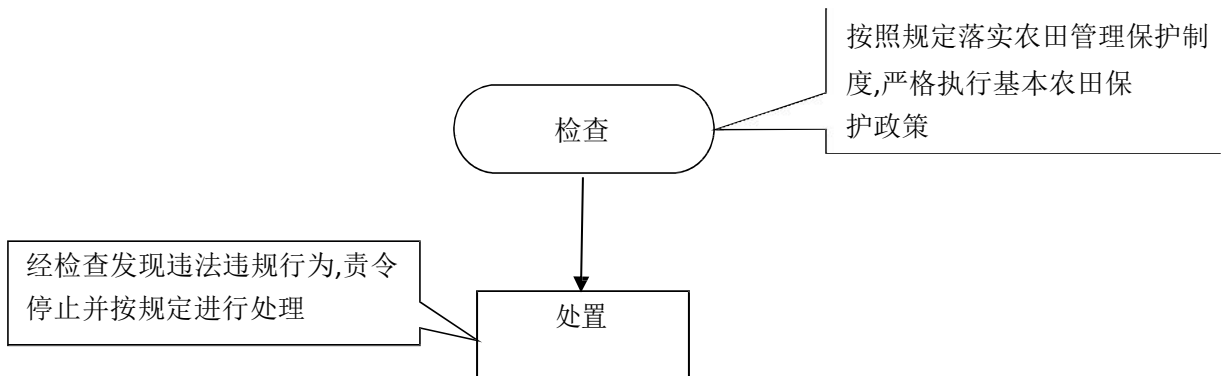
(71)



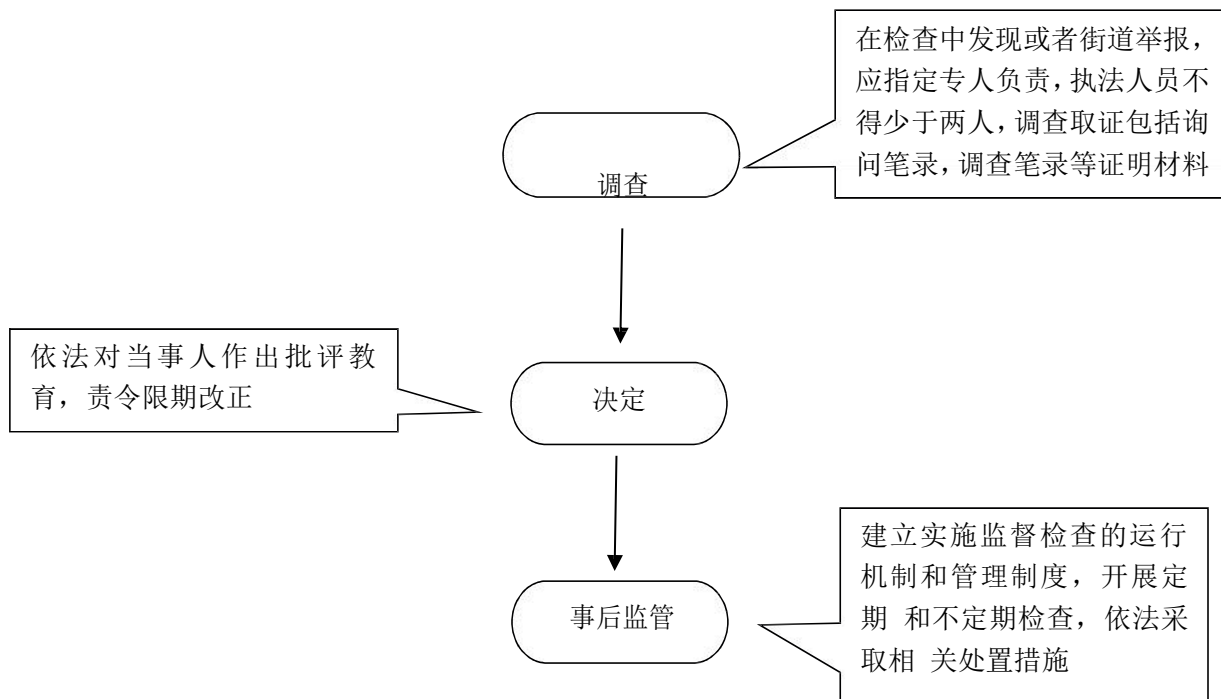
(72)



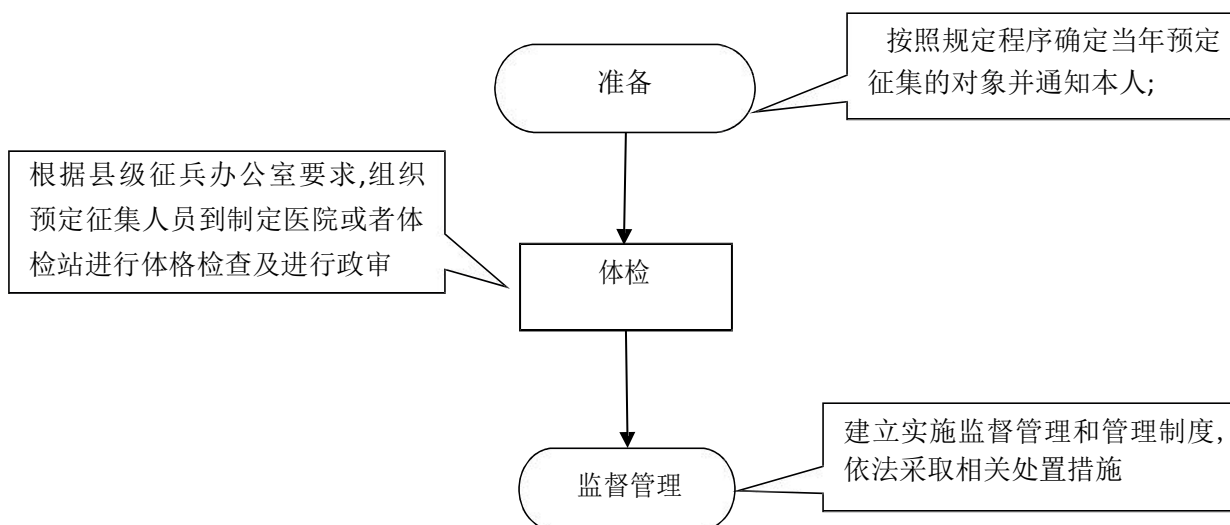
(73-74)



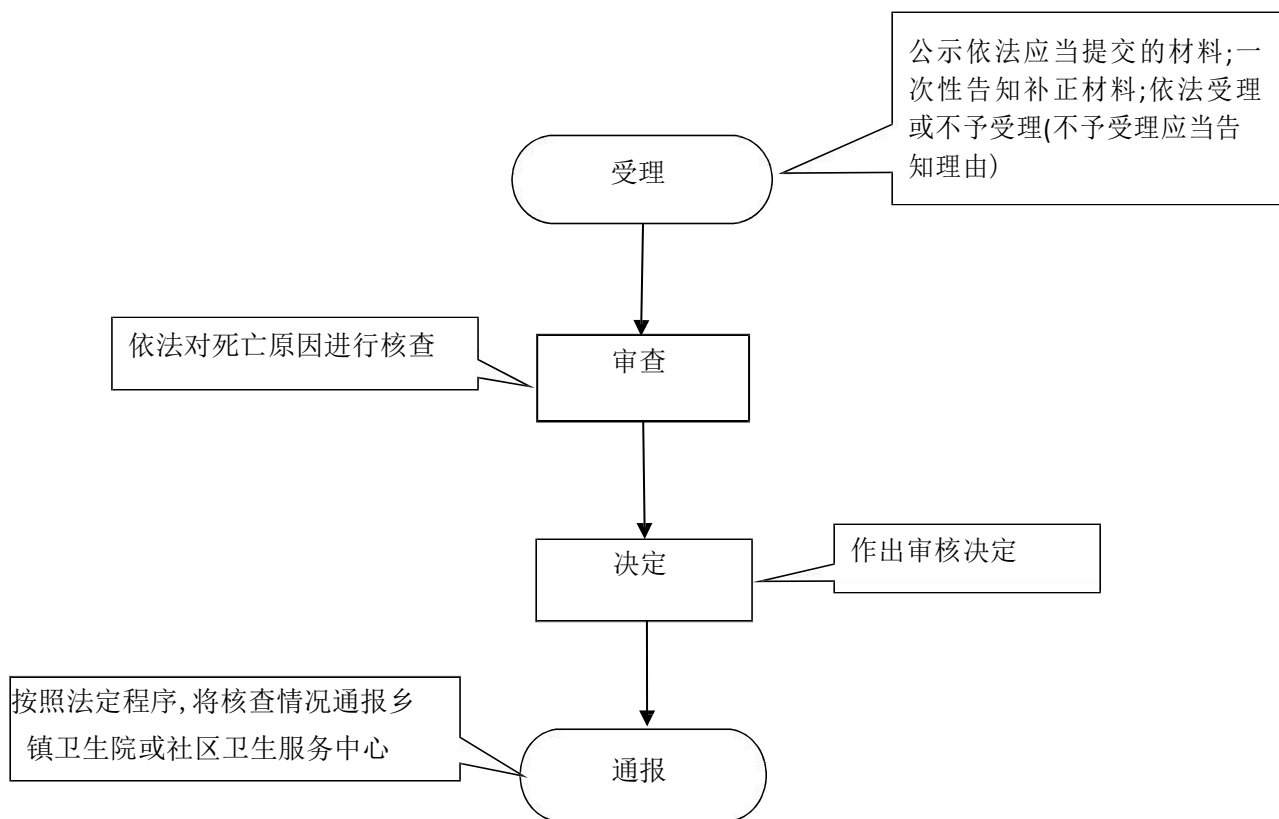
(75-76)



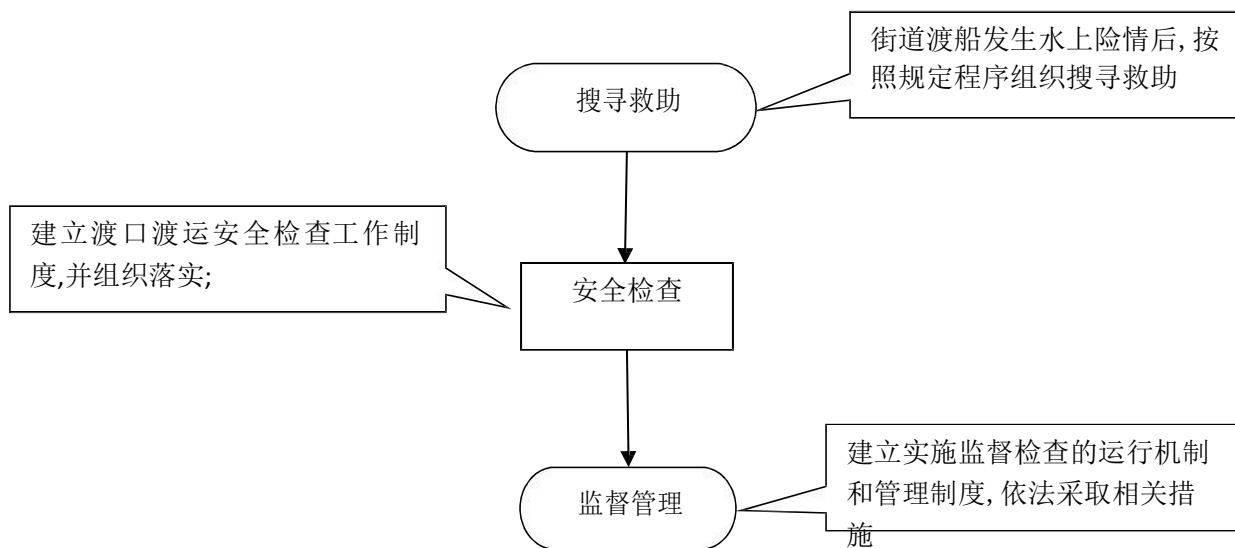
(77)



(78)



(79)



(80)

保障安全

依法维护学校周边秩序,保护学生、教师、学校的合法权益,为学校提供安全保障

执行

(81-82)

编制

组织规划编制单位、有关部门等开展规划编制工作

组织专家、相关部门审查、依法征求相关部门意见

审查

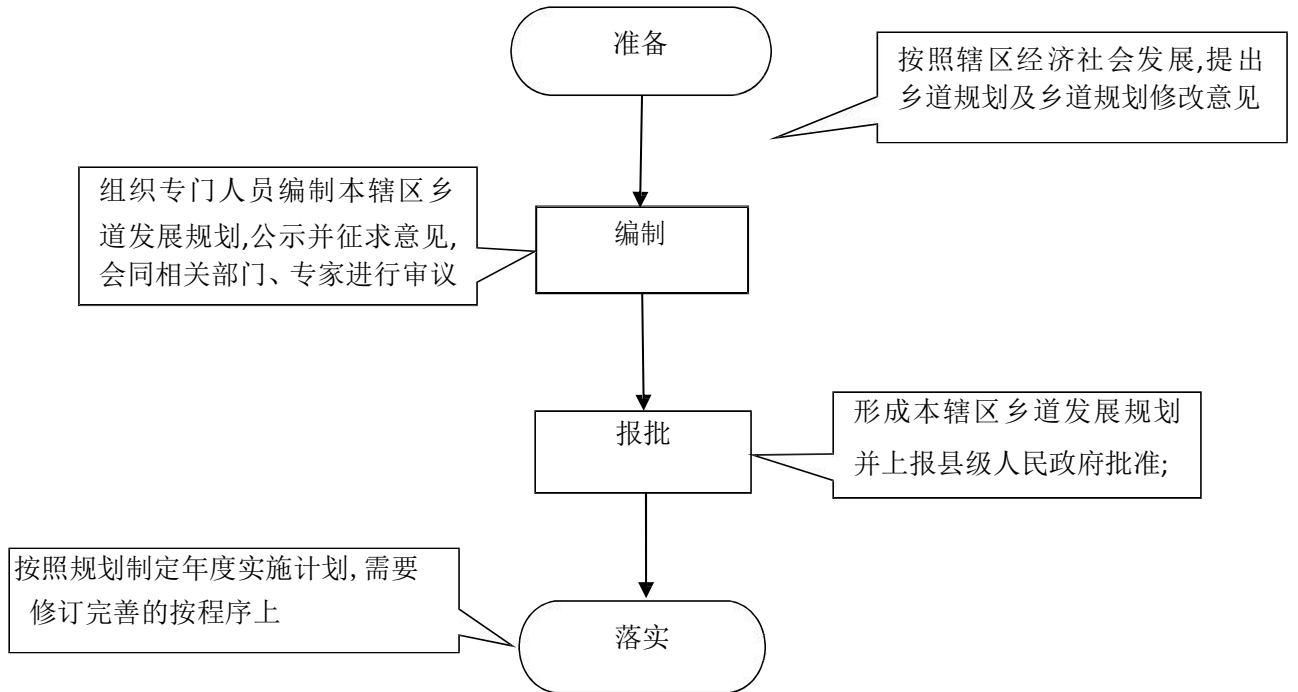
根据法定审批权限,上报县级人民政府批准,按规定进行信息公开

报批

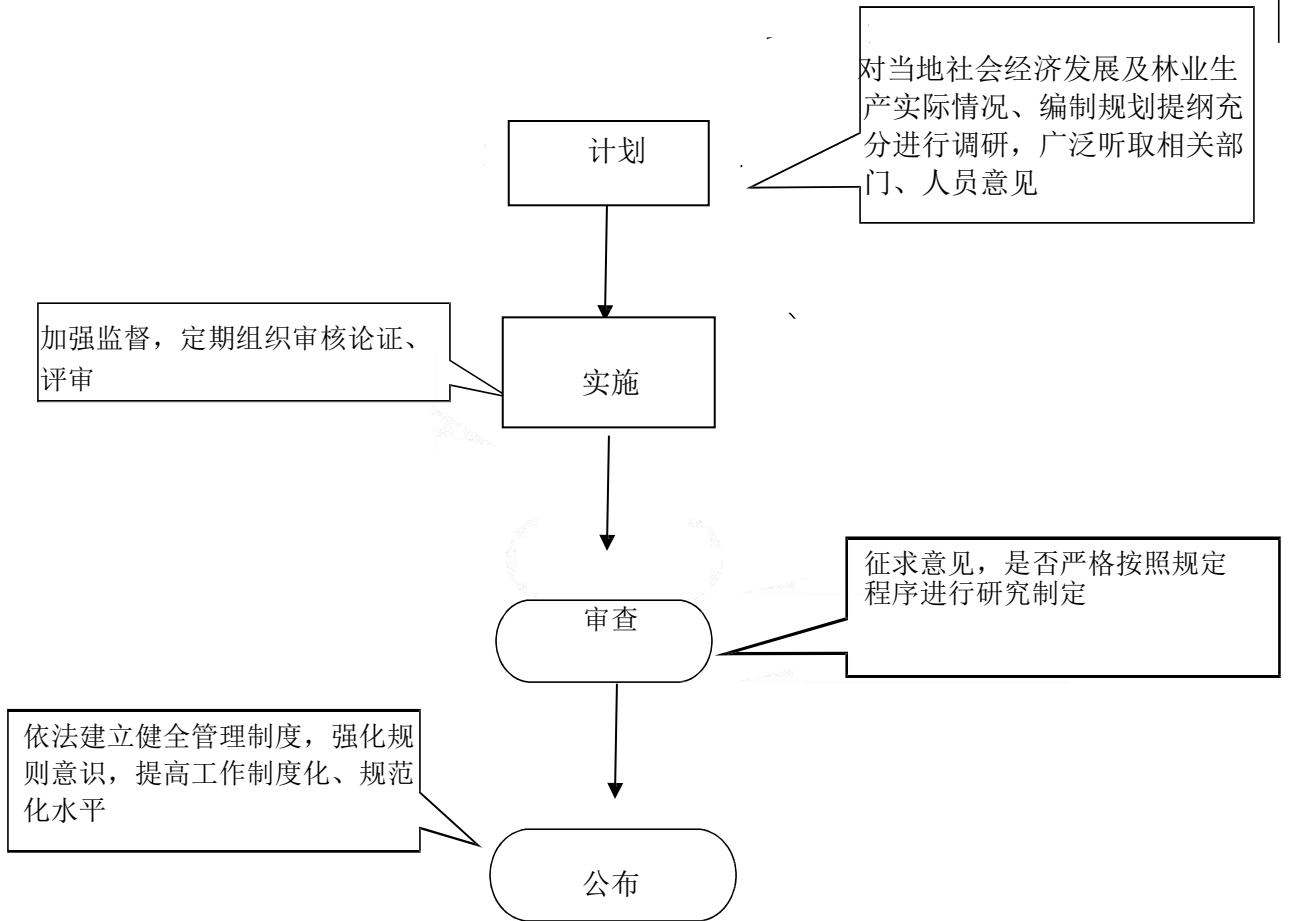
按照规划要求组织实施,定期跟踪评估规划实施效果,依法查处违规行为

事后监管

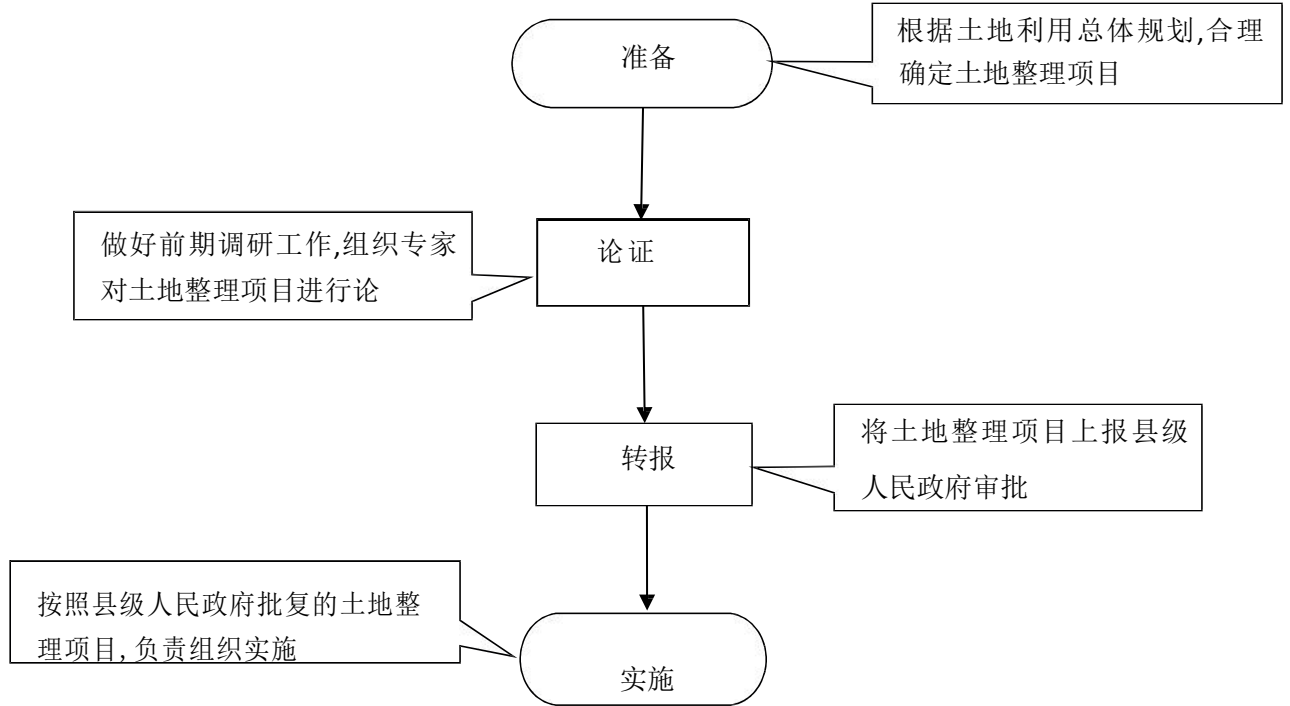
(83)



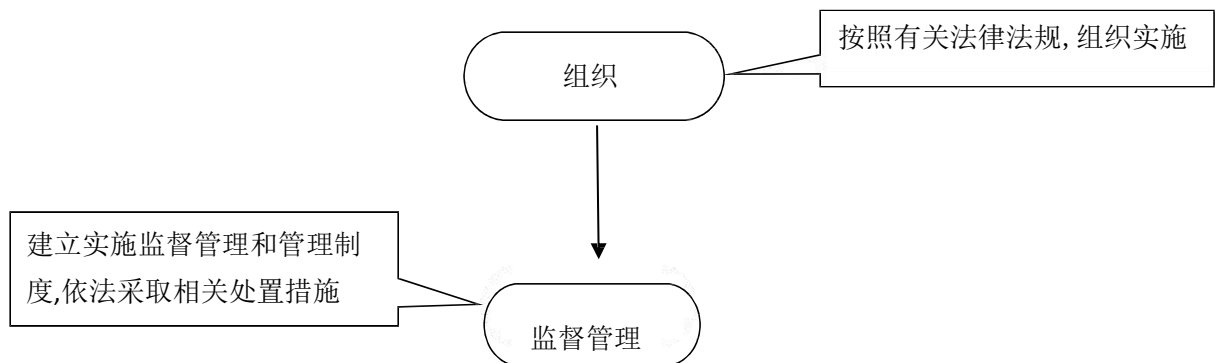
(84)



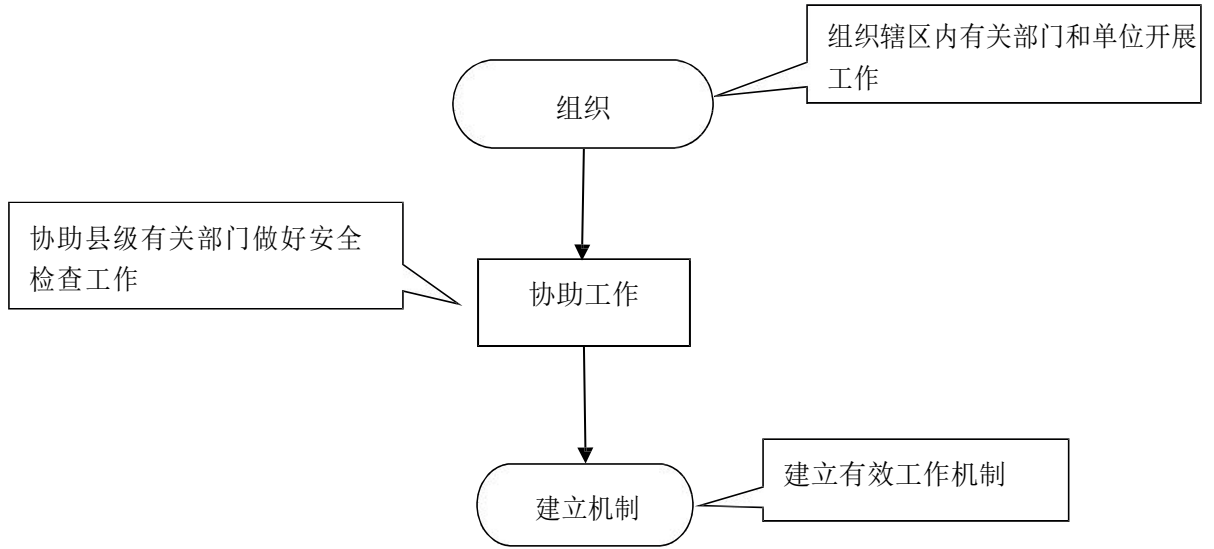
(85)



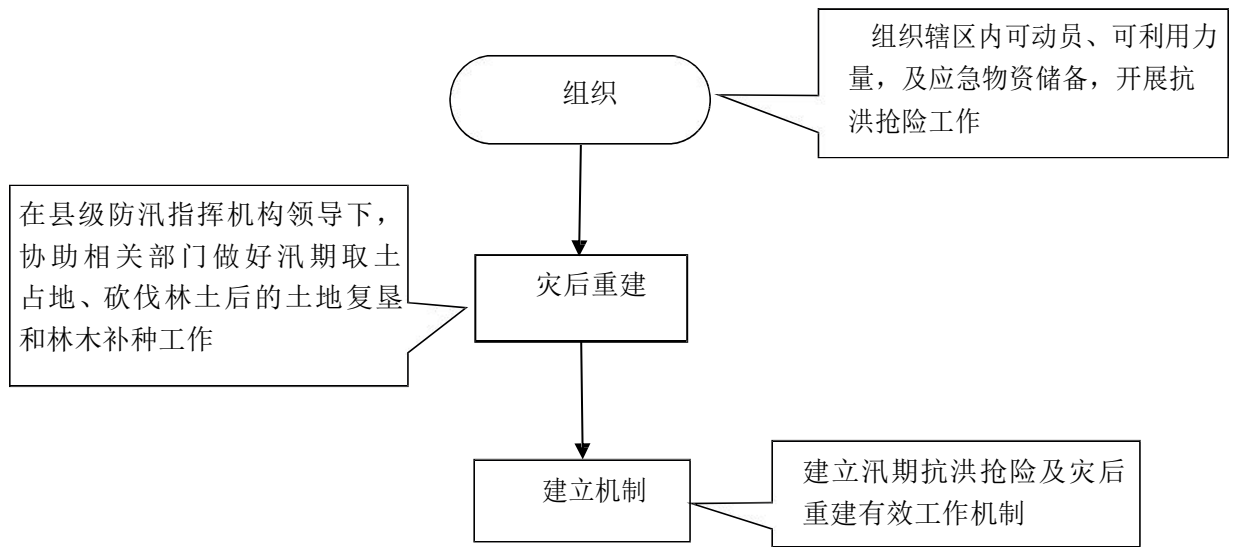
(86)



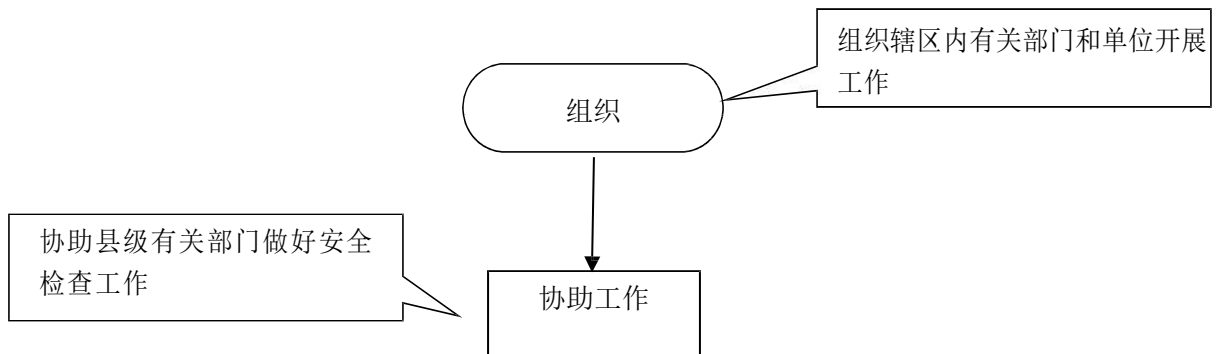
(87)



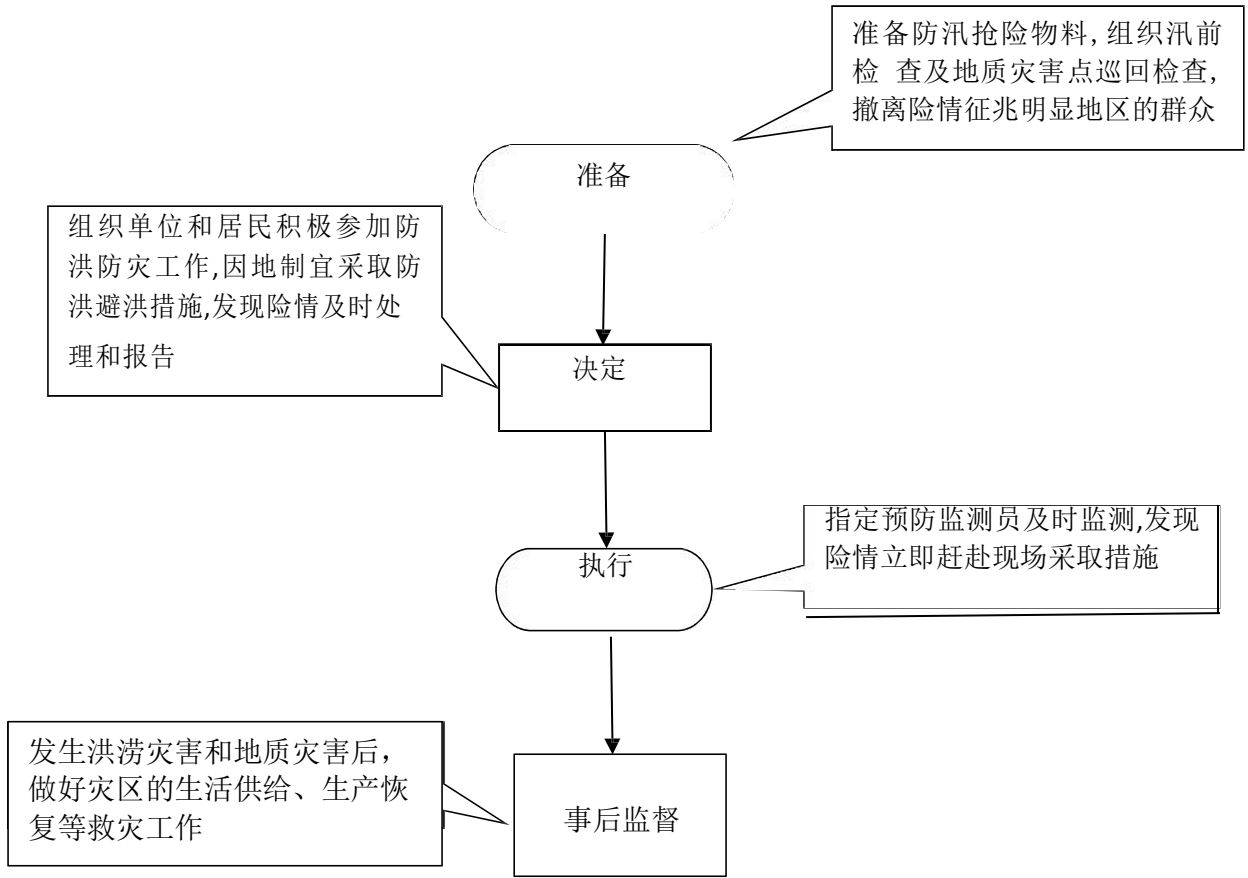
(88)



(89)



(90)



(91)

组织

根据火情和火灾现场指挥部要求,组织人员、调集所需物资支援灭火

(92)

信息公告

按照上级人民政府命令,公告进入临震应急期,做好地震信息公开工作

会同县级相关部门,组织协调辖区内各部门(单位)、村民委员会或居民委员会,按照地震应急预案做好应急防范和抗震救灾准

组织协调

(93)

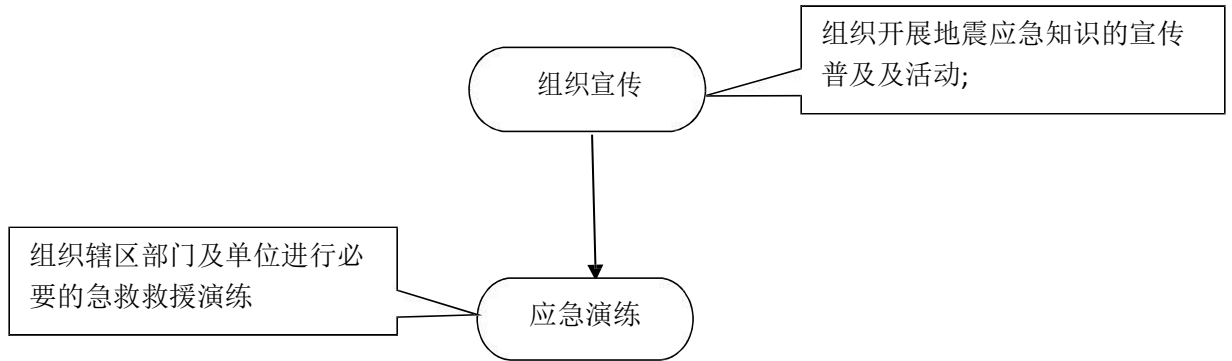
组织

协同县级相关部门,组织辖区内有生、可利用力量做好地震灾情后抢险工作并建立临震应急期的检查及应急措施工作机制

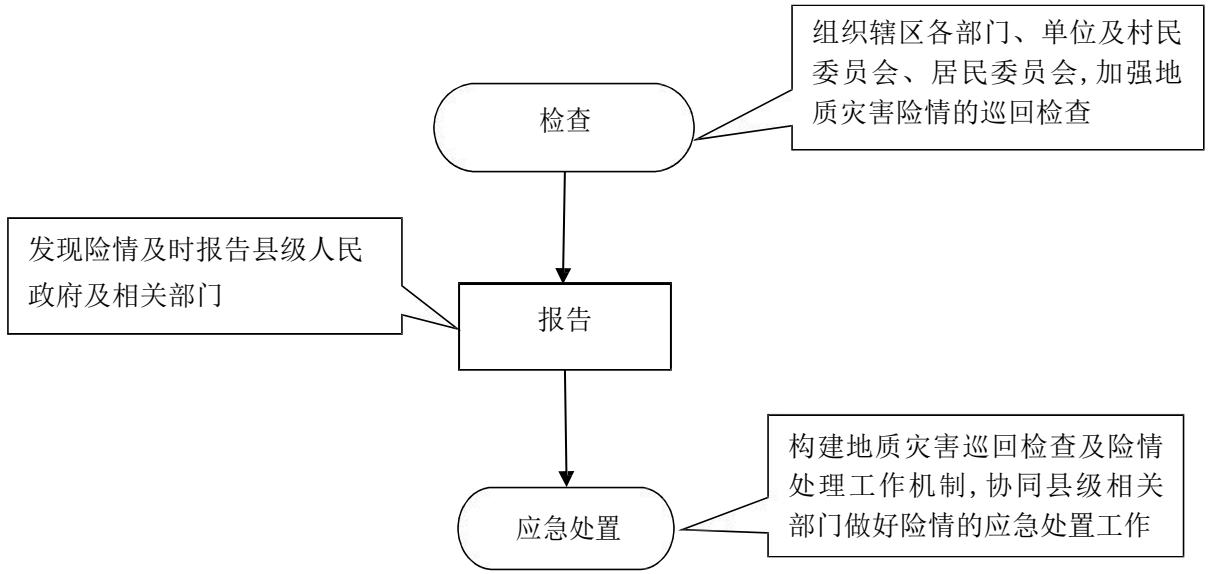
根据地震灾情发展,按照规定程序完成地震灾情上报工作

报告

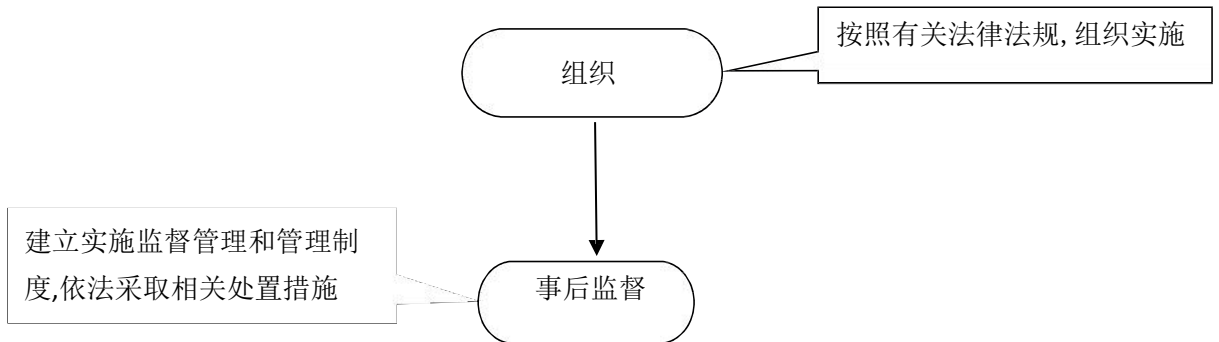
(94)



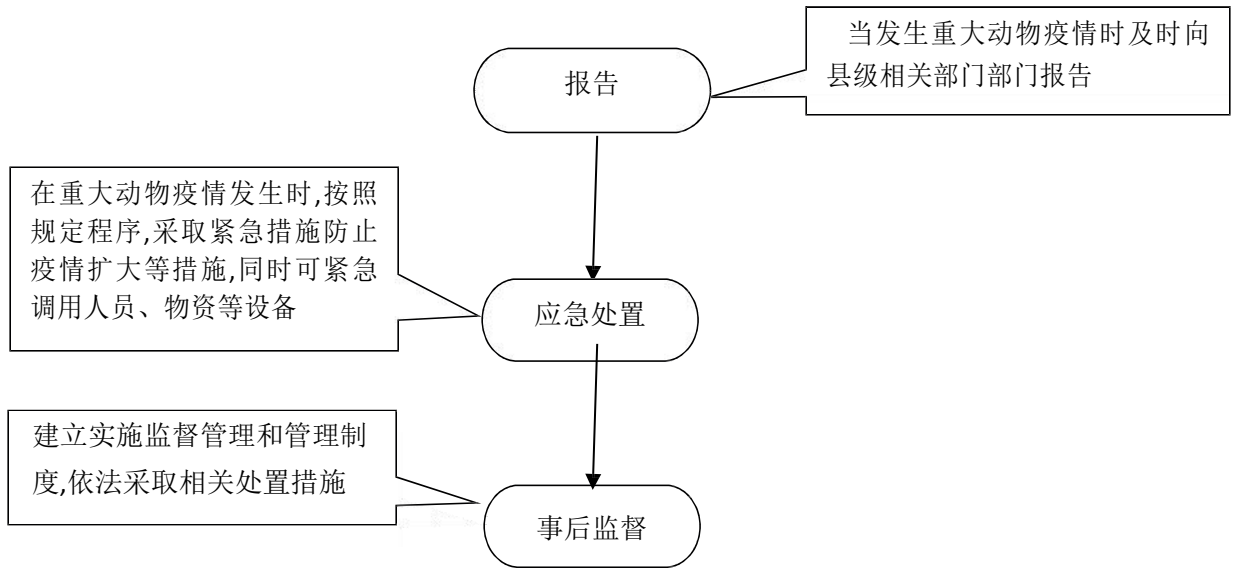
(95)



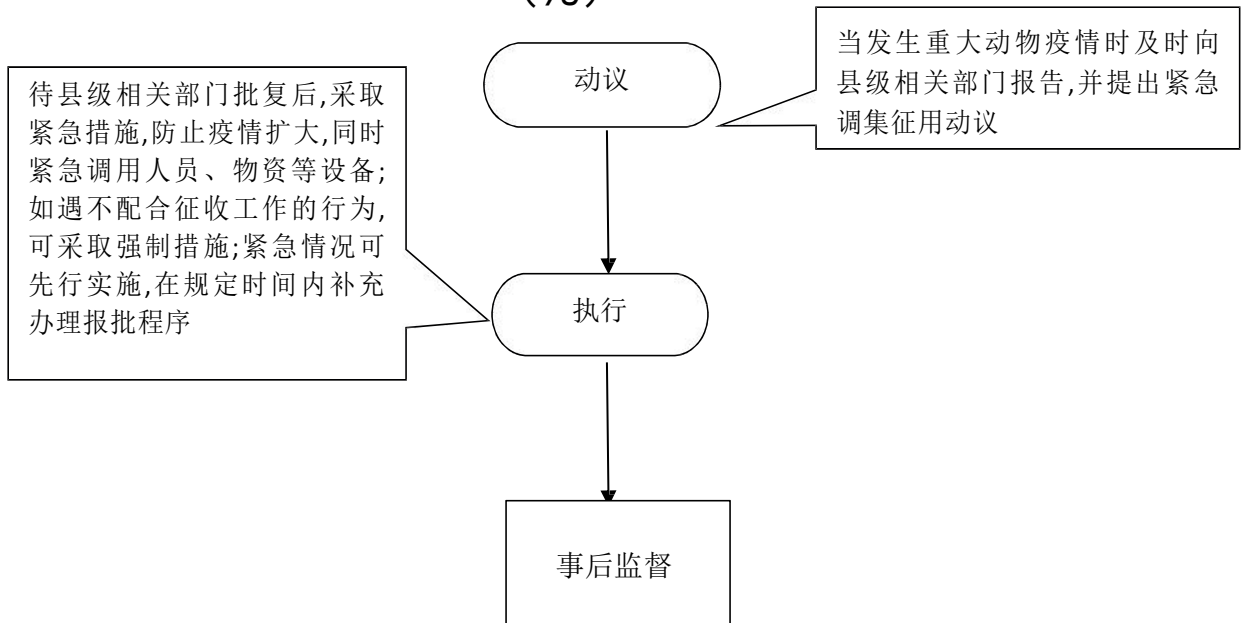
(96)



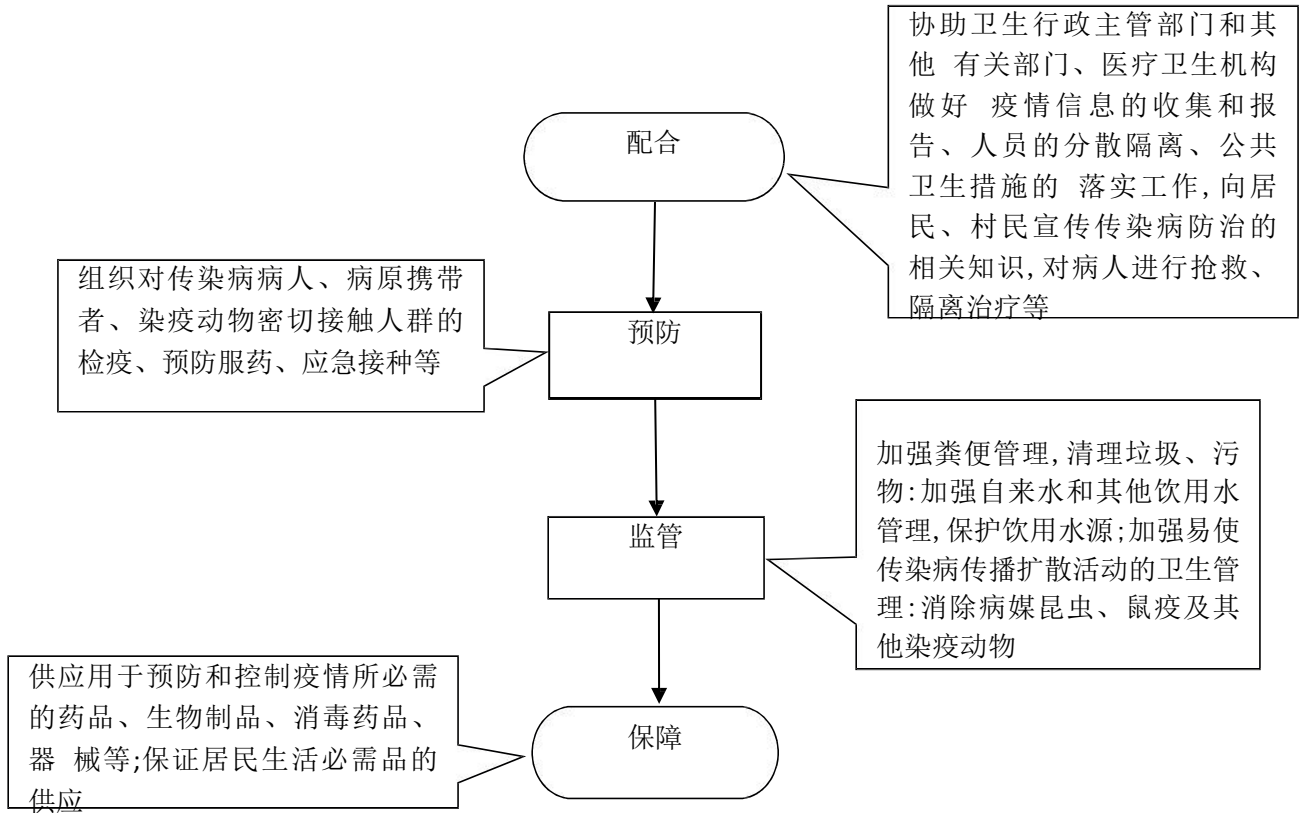
(97)



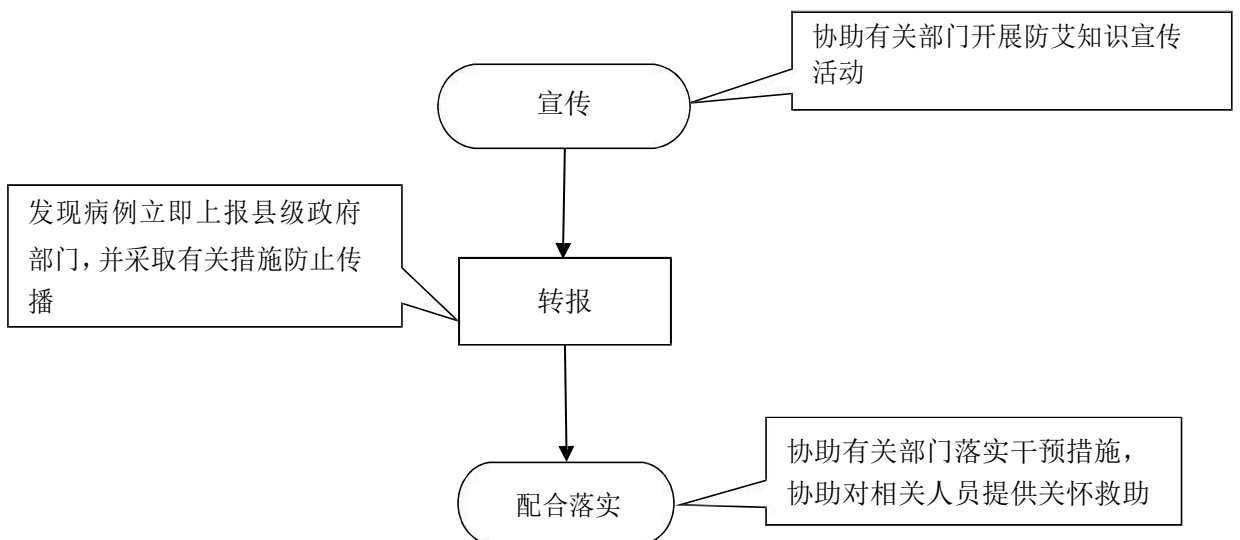
(98)



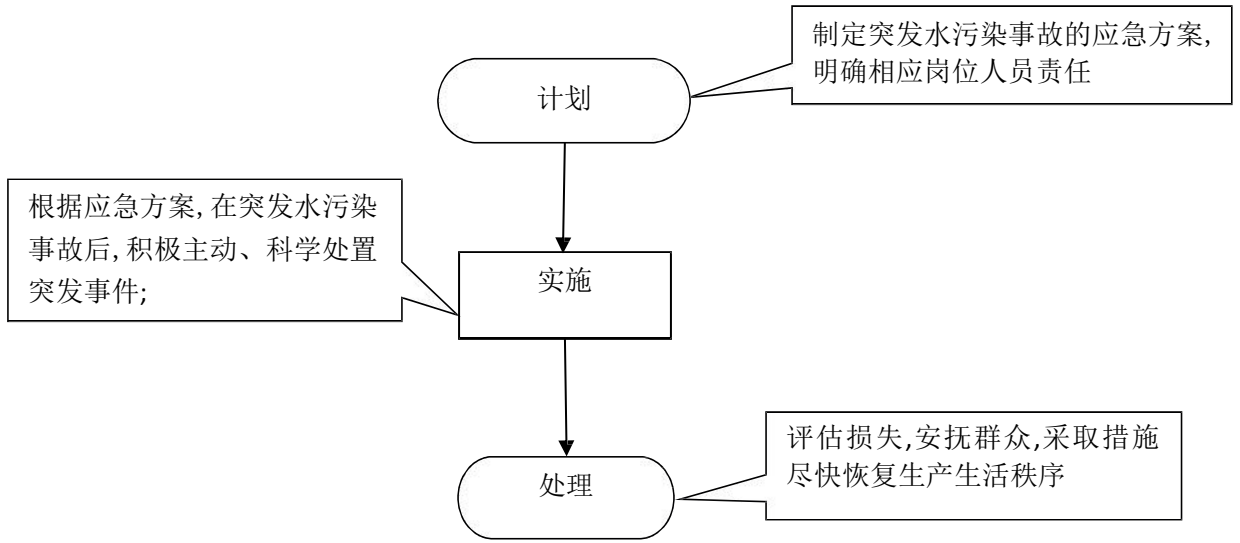
(99)



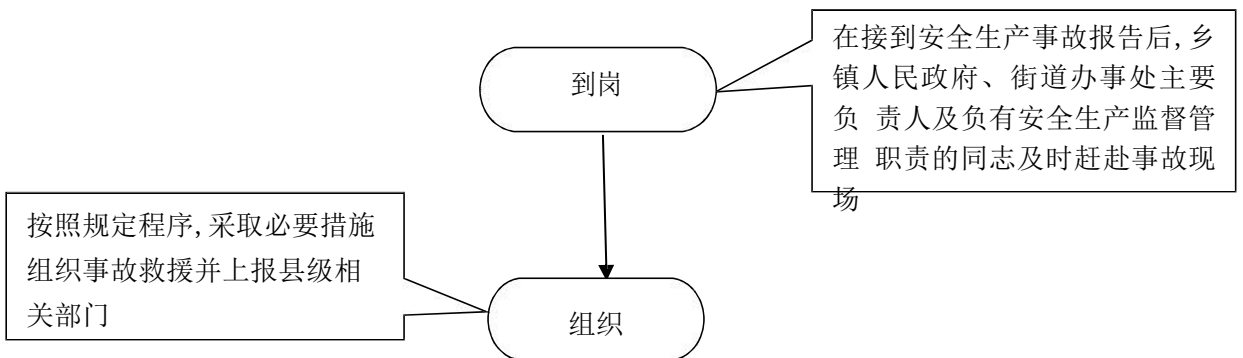
(100)



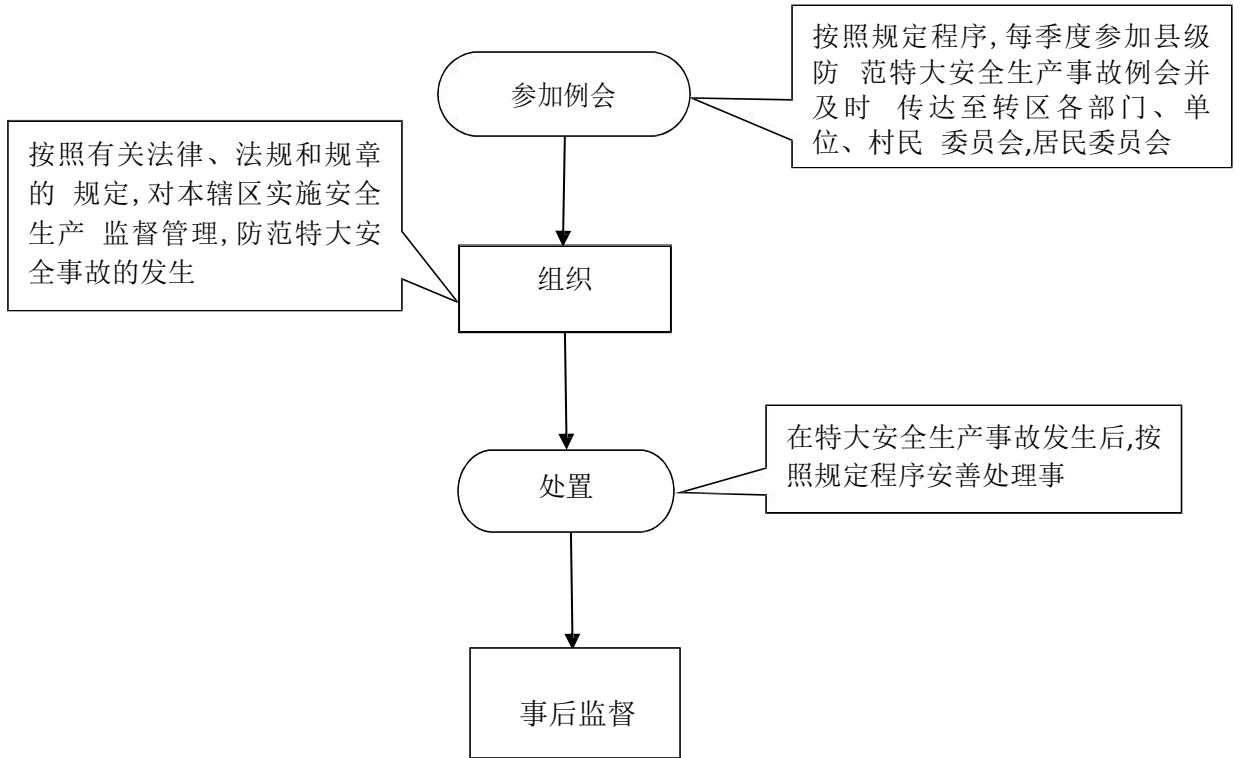
(101)



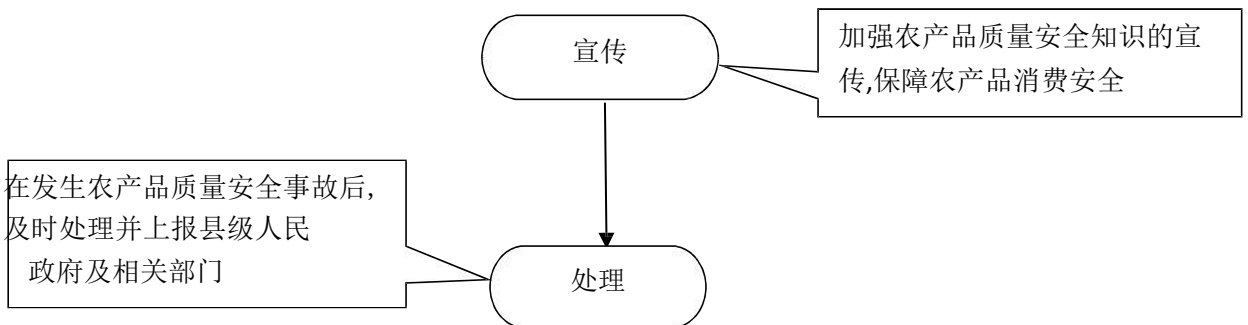
(102)



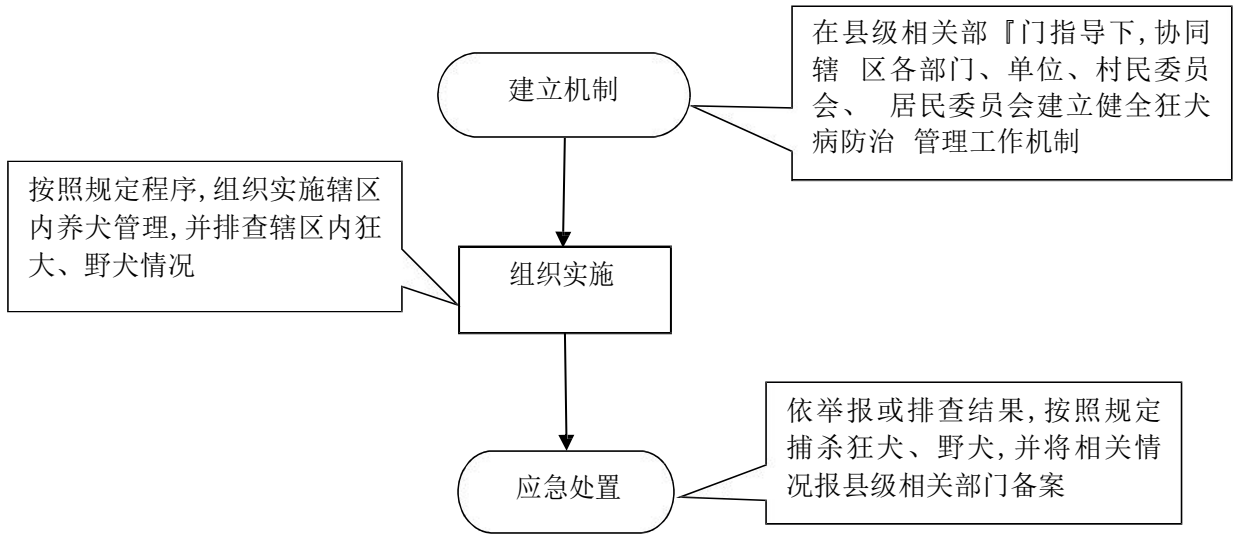
(103)



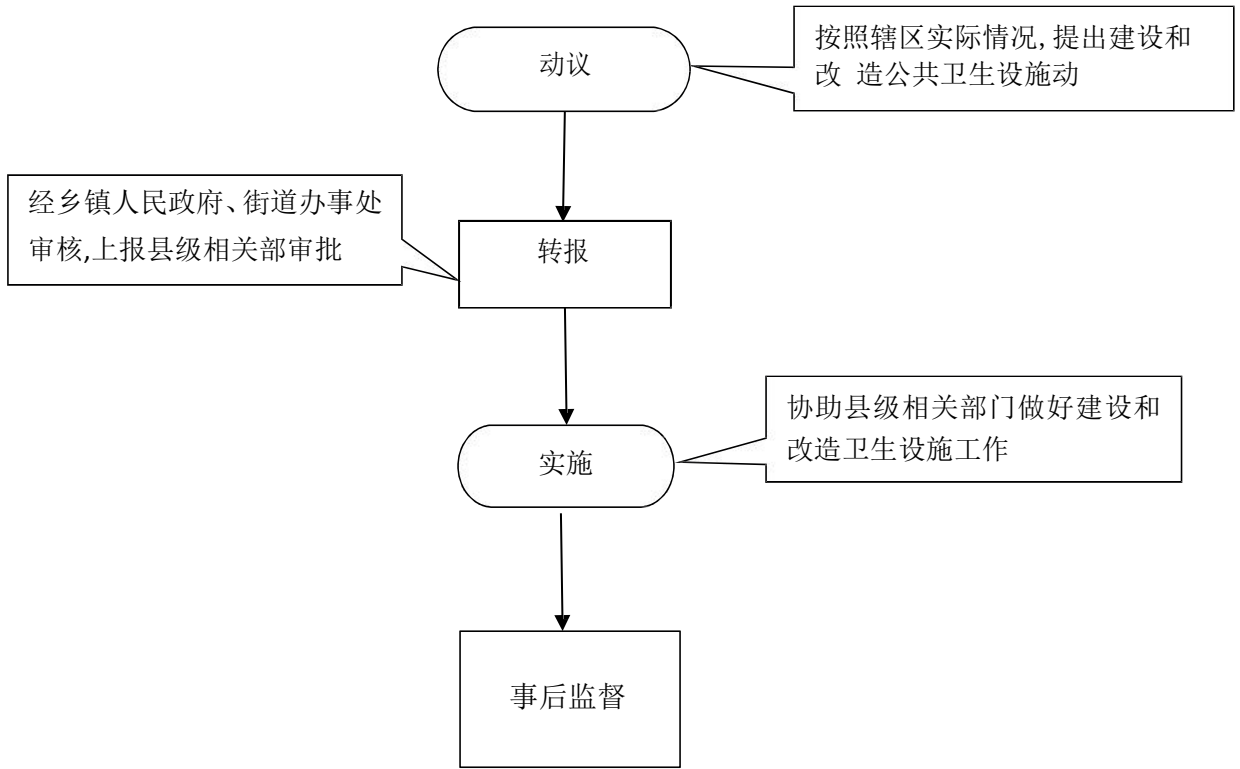
(104)



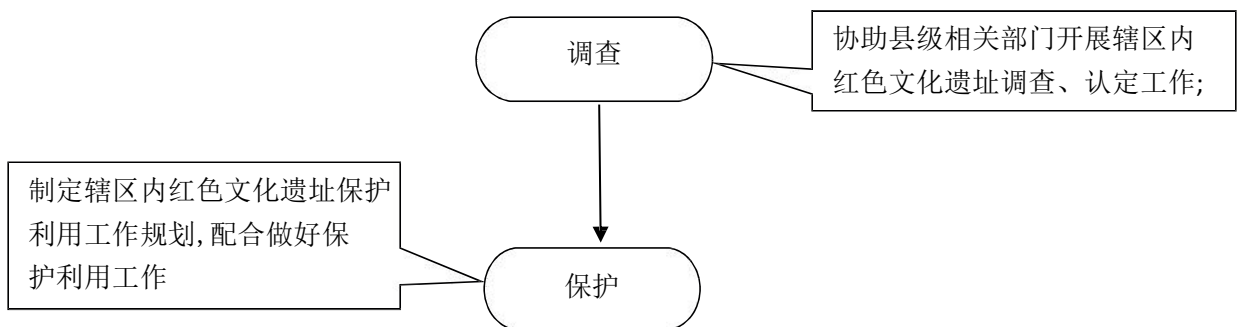
(105)



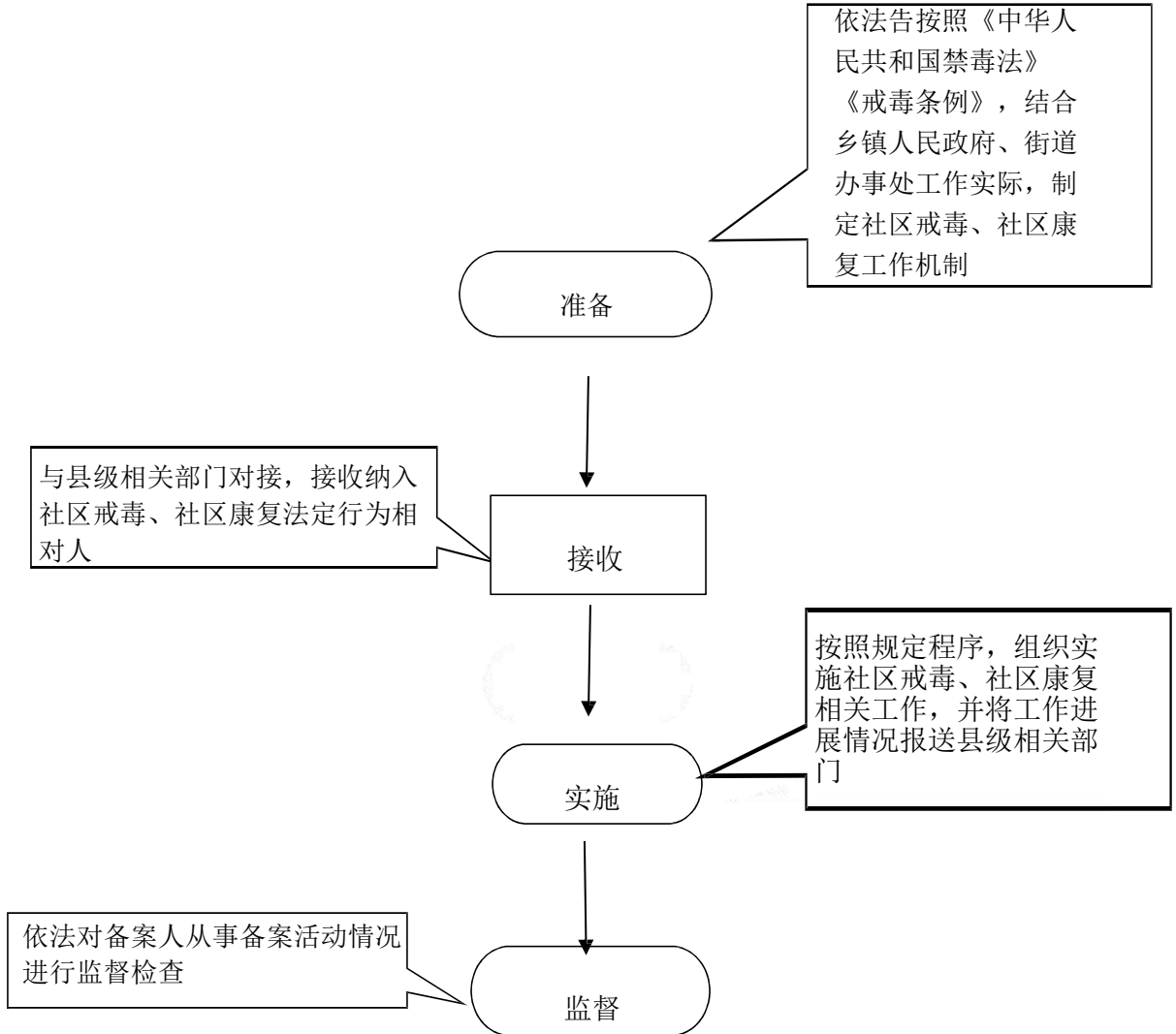
(106)



(107)



(108)



(109-111)

